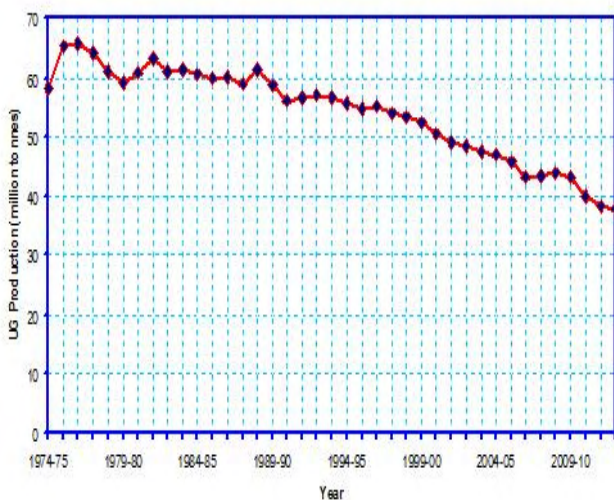


## One-day Workshop on

### “Underground Coal Mining in Indian Geo-Mining Condition: The Mine Operators Perspective” on 23rd Aug'13

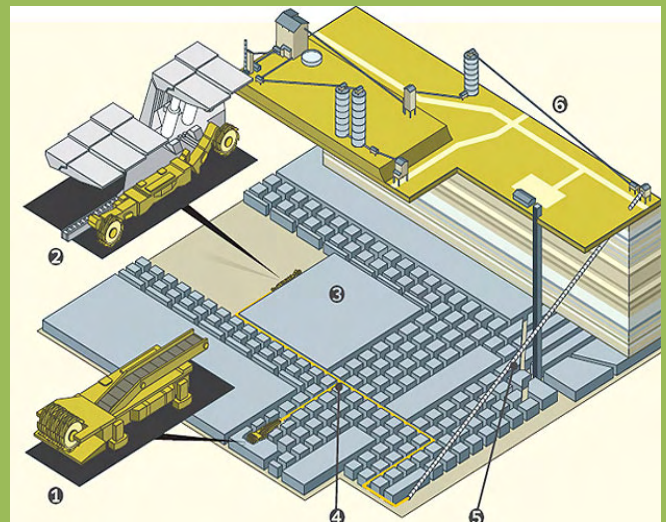
Decreasing trend of underground coal production is a cause of serious concern for the Indian coal industry. Great challenges lie ahead in the endeavour of enhancing the contribution of underground coal mines to the total coal production of the country.



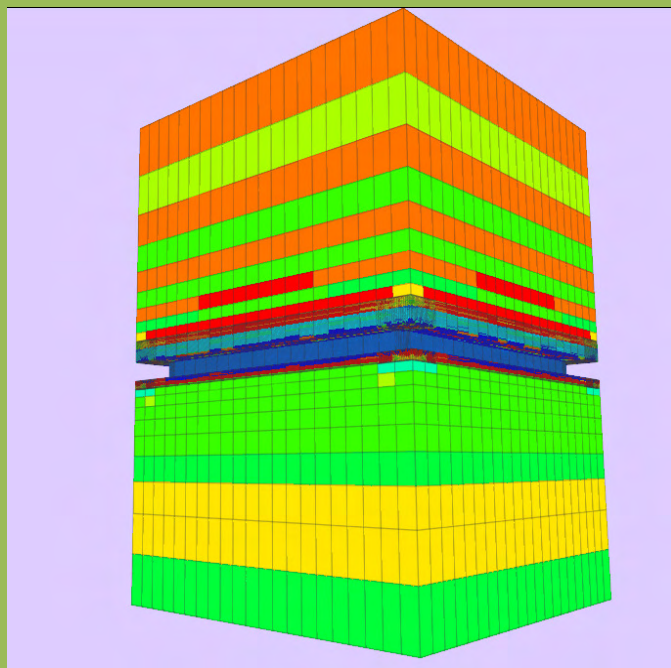
A thorough discussion amongst all those concerned with the coal industry - the policy makers, the regulatory authorities, scientific institutions, academicians, mine planners and operators is required to face the challenges ahead and to find ways and measures to overcome them.

Some of these issues that need to be discussed are as follows:

- Mine capacity and size of coal blocks
- Geo-mining conditions
  - Multi-seam conditions
  - Thick, thin and steep seams
  - Overlying and underlying Strata conditions
  - Abandoned old workings
  - Working under old/ existing OC workings
- Geological disturbances



- Surface constraints
- Stringent statutory restrictions
- Existing land acquisition procedures
- Rehabilitation and Resettlement
- Mine closure
- Mine planning, mining methods and technologies
- Research and development



- Economy and profitability
- Safety and conservation
- Numerical Modeling Techniques for optimisation of pillar size

New ideas and technologies for enhancing underground production are welcome from the participants which can be discussed in the workshop.

**CMPDI**  
A Mini Ratna Company

Corporate Office  
Gondwana Place, Kanke Road,  
Ranchi – 834031 (Jharkhand), INDIA  
Tel: +91651 2230483/ 2230116  
Fax: +91 651 2231447/ 2232249

Email: [ucmig2013@cmpdi.co.in](mailto:ucmig2013@cmpdi.co.in)  
Web site: <http://www.cmpdi.co.in>

Regional Institute-I: West End, G.T Road, Asansol - 713 301, West Bengal  
Regional Institute-II: Koyla Bhawan, Koyla Nagar, Dhanbad - 826 006, Jharkhand  
Regional Institute-III: Gondwana Place, Kanke Road, Ranchi - 834 031, Jharkhand  
Regional Institute-IV: Kasturba Nagar, Jaripatka, Nagpur - 440 014, Maharashtra  
Regional Institute-V: SECL Campus, Seepat Road, Bilaspur - 495 005, Chattisgarh  
Regional Institute-VI: CWS Colony, P.O Jayant Colliery, Sidhi - 486 890, Madhya Pradesh  
Regional Institute-VII: Gruha Nirman Bhawan, Sachivalaya Marg, Bhubneswar-751001, Orissa