

Annual Report

CSR & Sustainability



2015-16



CSR CELL

CENTRAL MINE PLANING AND DESIGN INSTITUTE LIMITED

Gondwana Place, Kanke Road, Ranchi-834031

Contents

CMD's Message.....	1
Introduction.....	2
Profile.....	4
Organizational Chart of CMPDI	6
CMPDI Board of Directors	7
CSR & Sustainability Policy.....	8
CSR & Sustainability Activities.....	16
Education	17
Infrastructure	23
Healthcare.....	26
Sports	26
Social Development	27
Women Empowerment/ Skill Development.....	28
Drinking Water/ Sustainability.....	29
Funding of CSR activities.....	30
CSR Expenditure	31
Sustainability Expenditure.....	39

This report indexes CMPDI's 2015-16 corporate social activities and works towards sustainable development. It is supplemented by information on our website (www.cmpdi.co.in) which provides a snapshot of recent activities

शेखर सरन
अध्यक्ष-सह-प्रबन्ध निदेशक

Shekhar Saran
Chairman-cum-Managing Director



सेन्ट्रल माईन प्लानिंग एण्ड डिजाइन इन्स्टीच्यूट लिमिटेड
(कोल इण्डिया लिमिटेड की अनुषंगी कम्पनी / भारत सरकार का एक लोक उपक्रम)
गोन्दवाना प्लेस, कान्के रोड, राँची - 834 031, झारखंड (भारत)

Central Mine Planning & Design Institute Limited
(A Subsidiary of Coal India Limited / Govt. of India Public Sector Undertaking)
Gondwana Place, Kanke Road, Ranchi - 834 031, Jharkhand (INDIA)


Message

I am extremely happy to note that Central Mine Planning & Design Institute Limited (CMPDI) is bringing out a Corporate Social Responsibility (CSR) & Sustainability Report for the year 2015-16.

Corporate Social Responsibility facilitates integration of Social, Environmental and Ethical Responsibilities into the governance for a long lasting profitability and sustainability. Today, it is imperative for the Corporate to move faster towards CSR and develop the communities in which they operate, grow and flourish to stay afloat.

It is a matter of pride that their CSR strategies are aligned to national priorities for building an inclusive, sustainable and strong India. As responsible entities, CMPDI has developed backward regions, created infrastructure, and produced essential services. The company has been in the forefront of providing healthcare, support to education, vocational assistance to the deprived and underprivileged sections of the society, besides focusing on Women Empowerment and Environment protection.

In financial year 2015-16, CMPDI has implemented the CSR and sustainable development projects worth Rs. 200.72 lakhs. To conclude, I would like to thank our stakeholders for their support and assure them that we are ever willing to improve and are committed towards building a sustainable community.


26/07/2016

(Shekhar Saran)

Ranchi

Date: 26th July 2016

INTRODUCTION

As it is well known, Corporate Social Responsibility (CSR) is a Company's commitment to operate in an economically, socially and environmentally sustainable manner, while recognizing the interests of its stakeholders. Stakeholders include investors, customers, employees, business partners, local community, environment and society. Thus it can be seen that Corporate Social Responsibility is closely linked with Sustainable practices. Corporate Social Responsibility is not and should not be confined to philanthropic activities (as it used to be narrowly interpreted earlier) rather; it should facilitate the integration of social and business goals. They have to be viewed as commitments which are not only helpful for the society but also help in securing a sustainable competitive advantage for the companies. We understand Corporate Social Responsibility as a company's commitment to operate in a manner which is transparent, sustainable and increasingly satisfying to its stakeholders.

Corporate Social Responsibility seeks to achieve the convergence among the following three types of strategies:

Environment Sustainability Strategy - optimizing the impact of products or operations on the environment including waste/emission/effluent reduction with proper treatment.

Social Sustainability Strategy - optimizing the impact of products or operation on social aspects such as labour, human capital development, health, safety, regional development and community development.

Economic Sustainability Strategy - optimizing the financial performance and address broader economic issues such as the sustainability of business and its human capital as well as promotion of fair globalization.



Here is a brief overview of commonly accepted benefits of having a sound CSR policy which inspire us to actively take up CSR activities:

- ❖ Serving all the company's stakeholders is accepted as the best way to produce long term success and to create a growing, prosperous company.
- ❖ The company's products and technologies are directed to contribute to the benefits and welfare of the people.
- ❖ The company creates win-win relationship with their stakeholders.
- ❖ The company grows hand-in-hand with their employees supporting them to reach their full potential and improve their standard of living.
- ❖ Company prosperity is directly linked to the prosperity of customers, suppliers and shareholders.
- ❖ CSR helps to create positive image of the company through its activities.

At CMPDI, we view CSR as a way of conducting business, which enables us to distribute "growth" within our stakeholders in a better manner. The implementation and integration of ethical systems and sustainable management practices also form a key component of our CSR policy. At CMPDI, we do not believe CSR to be emanating directly from external demands; instead we see it as a process by which our managers evolve our relationship with our stakeholders for the common good and we demonstrate our commitment in this regard by adoption of appropriate business processes and strategies. We have already emphasized that CSR and sustainable development are two sides of the same coin and so we believe in the philosophy that economic and industrial development must go on in such a way that no irreparable damage be done to the environment.

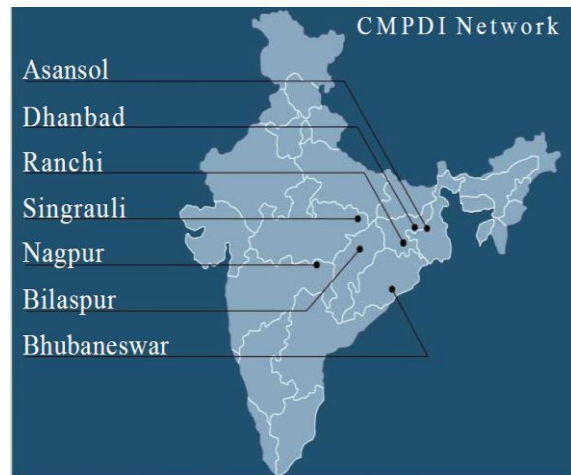
PROFILE

CMPDI (Central Mine Planning & Design Institute Limited), an ISO-9001 company, holds the pre-eminent position as the India's largest consultancy organization and the market leader in an expanding earth resource sector. In May 2009, CMPDI got the status of Mini Ratna (Category – II). A key factor in this success has been the offering of full-range of services in the sphere of resource exploration & development in:

- Exploration
- Mining
- Coal Preparation
- Coal Utilization and Management
- Coal Technology
- Coal / Material Handling Arrangement
- Engineering, and
- Environmental Management.



CMPDI was established in the year 1975 as a subsidiary of Coal India Limited (a Government of India Public Sector Undertaking). CMPDI operates through its headquarters at Ranchi and seven Regional Institutes designated as RI-I to RI-VII located at Asansol, Dhanbad, Ranchi, Nagpur, Bilaspur, Singrauli and Bhubaneswar respectively. Seven Regional Institutes render consultancy services to seven corresponding subsidiaries of CIL viz. ECL (RI-I), BCCL (RI-II), CCL (RI-III), WCL (RI-IV), SECL (RI-V), NCL (RI-VI), & MCL (RI-VII). Consultancy services to CIL (HQ), NEC & non-CIL clients are provided mainly through CMPDI (HQ). CMPDI also handles specialized assignments of Ministry of Coal and CIL. CMPDI provides consultancy services as also turnkey execution of projects to various organisations in India and abroad.



MISSION

The Mission of CMPDI is to provide total consultancy in Coal and mineral exploration, mining, engineering and allied fields as premier consultants in India and a leading one in the International arena.

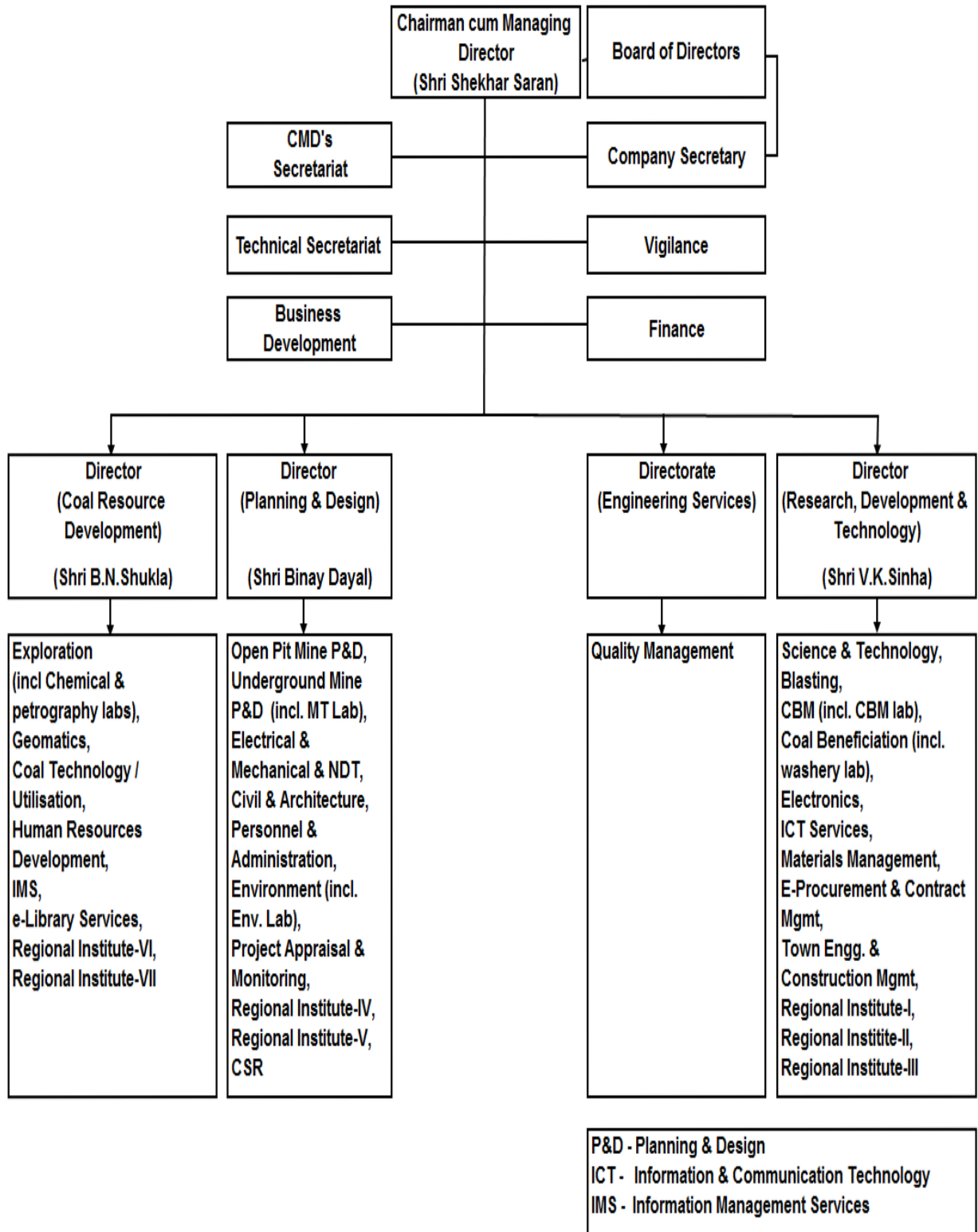
VISION

The Vision of CMPDI is to be the market leader in an expanding earth resource sector and allied professional activities.

ORGANISATION STRUCTURE OF CMPDI

ORGANISATION STRUCTURE OF CMPDI

(As on 16.03.2016)



CMPDI BOARD OF DIRECTORS

FULL TIME



Sri Shekhar Saran
Chairman-cum-Managing Director



Sri V. K. Sinha
Director (T/RD&T)



Sri B.N. Shukla
Director (T/CRD)



Sri Binay Dayal
Director (T/P&D)

PART TIME



Sri D.N. Prasad
Adviser (Projects), MoC



Sri Nagendra Kumar
Director (Tech.), CIL

NON-OFFICIAL PART TIME



Sri Rakesh Kumar Mittal
Independent Director



Sri Rajendar Parsad
Independent Director



Sri Debasish Gupta
Independent Director

CSR & SUSTAINABILITY POLICY

I. PREAMBLE

The concept of Corporate Social Responsibility has gained prominence from all avenues. Organizations have realized that Govt. alone will not be able to get success in its endeavor to uplift the downtrodden of Society. With the rapidly changing corporate environment, more functional autonomy, operational freedom etc. Central Mine Planning and Design Institute Limited (CMPDI) has adopted CSR as a strategic tool for sustainable growth. For CMPDI in the present context, CSR means not only investment of funds for Social Activity but also Integration of Business processes with Social processes.

Even much before the issue of CSR became global concern, CMPDI was aware of its Corporate Social Responsibility and was fulfilling the aspiration of the Society through well-defined "Community Development Policy" within the periphery of 25 km. of the Project sites. This has resulted into a harmonious relationship between CMPDI and the peripheral Communities.

II. INTRODUCTION:

CMPDI was established in the year 1975 as a subsidiary of Coal India Limited (a Government of India Public Sector Undertaking). CMPDI operates through its headquarters at Ranchi and seven Regional Institutes designated as RI-I to RI-VII located at Asansol, Dhanbad, Ranchi, Nagpur, Bilaspur, Singrauli and Bhubaneswar respectively. Exploration of coal has profound impact on the people living in and around the areas where the project of CMPDI are established. Hence, the primary beneficiaries of CSR should be PAP and those staying within the radius of 25 km of the Project. Poor and needy section of the society living in different parts of India should be second beneficiaries.

In the aforesaid backdrop, policy on Corporate Social Responsibility of CMPDI **has been framed after incorporating the features of the Companies Act 2013 and as per notification issued by Ministry of Corporate Affairs, Govt. of India on 27.02.2014 as well as DPEs guidelines and broadly covers** the following: -

- a) Welfare measures for the community at large, so as to ensure the poorer section of the Society derived the maximum benefits.
- b) Contribution to the society at large by way of social and cultural development, imparting education, training and social awareness specially with regard to the economically backward class for their development and generation of income to avoid any liability of employment.
- c) Protection and safeguard of environment and maintaining ecological balance.

III. OBJECTIVE

The main objective of CSR policy is to lay down guidelines for the CMPDI to make CSR a key business process for sustainable development for the Society. It aims at supplementing the role of the Govt. in enhancing welfare measures of the society based on the immediate and long term social and environmental consequences of their activities. CMPDI will act as a good Corporate Citizen, subscribing to the principles of Global Compact for implementation.

IV. AREAS TO BE COVERED

The poor and needy Section of the Society living in different parts of India would normally be covered. The CSR Programme will also cover the existing components of Special Corporate Plan (SCP) and Tribal Sub Plan (TSP) for development of the SC and ST population besides development components for the entire population.

- For carrying out CSR activities of CMPDI, 80% of the budgeted amount should be spent within the radius of 25 Km of the **Project Site/ Company HQ** and 20% of the budget would be spent within the State/States in which the Regional Institutes are operating.
- In case CSR budget of CMPDI (HQ), or any Regional Institutes is exhausted, the CMD of CMPDI may refer the particular CSR activity/ project/programme to CIL which are considered to be emergent/important by the CMD.

V. ALLOCATION OF FUND

- (i) The fund for the CSR should be allocated based on 2% of the average net profit of the Company for the three immediate preceding financial years.
- (ii) The Unspent amount in CSR budget in a particular year will not lapse and shall be added with CSR budget of subsequent years of CMPDI.

VI. SCOPE

As per Schedule VII of New Companies Act 2013 the following should be the Scope of Activities under Corporate Social Activities:

- i) Eradicating hunger, poverty and malnutrition, promoting preventive health care and sanitation and making available safe drinking water.
- ii) Promoting education, including special education and employment enhancing vocation skills especially among children, women, elderly and differently abled and livelihood enhancement projects;
- iii) Promoting gender equality, empowering women, setting up homes and hostels for women and orphans, setting up old age homes, day care centres and such other facilities for senior citizens and measures for reducing inequalities faced by socially and economically backward groups;
- iv) Ensuring environmental sustainability, ecological balance, protection of flora and fauna, animal welfare, agro-forestry, conservation of natural resources and maintaining quality of soil, air and water;
- v) Protection of national heritage, art and culture including restoration of buildings and sites of historical importance and works of art: setting up public libraries, promotion and development of traditional arts and handicrafts;
- vi) Measures for the benefit of armed forces veterans, war widows and their dependents;

- vii) Training to promote rural sports, nationally recognized sports, Paralympics sports and Olympic sports;
- vii) Contribution to the Prime Ministers National Relief Fund or any other fund set up by the central government for socio-economic development and relief and welfare of scheduled castes, the scheduled tribes , other backward classes, minorities and women;
- ix) Contribution or funds provided to technology incubators located within academic institution which are approved by central government;
- x) Rural development projects;

VII. IMPLEMENTATION

- a) The investment of CSR should be project based and for every project time framed periodic mile stones should be finalized at the outset.
- b) Project activities identified under CSR are to be implemented by Department or specialized agencies. Specialized agencies could be made to work singly or in tandem with other agencies. Specialized agencies would include:
 - I. Community based organization whether formal or informal.
 - II. Elected local bodies such as Panchayats.
 - III. Voluntary Agencies (NGOs).
 - IV. Institutes/ Academic Organizations.
 - V. Trusts, Mission etc.
 - VI. Self-help groups.
 - VII. Government, Semi-Government and Autonomous Organizations.
 - VIII. Standing Conference of Public Enterprises (SCOPE)
 - IX. Mahila Mondals/Samitis and the like.
 - X. Contracted agencies for civil works.
 - XI. Professional Consultancy Organization etc.
- c) Activities related to Sustainable Development will form a significant element of the total initiatives of CSR. Such activities should come under the 3 UN Global Compact Principal pertaining to the Environment Business are asked to
 - a. Support a precautionary approach to environment challenges.
 - b. Undertake initiatives to promote greater environmental responsibility and
 - c. Encourage the development and diffusion of environmentally friendly technologies.

VIII. INSTITUTIONAL ARRANGEMENT

- a) All proposals under CSR activity would be examined by the CSR committee keeping in view of the Companies Act, 2013 latest DPEs guidelines together with cost benefit analysis.
- b) CMPDI having a net profit of Rs. 5 crores or more during any financial year shall constitute a Board Level Committee on CSR consisting of three or more Directors, out of which atleast one Director shall be an Independent Director.

- c) The activities of the CSR committee will also involve the following:
 - i) Interact with the concerned State officials/ Govt. officials, if required to confirm the areas for undertaking activities under CSR and ensure to avoid duplicity of the job.
 - ii) To decide the priority of the activities to be undertaken under CSR.
 - iii) To interact with the CSR implementing agencies for determining the activities to be undertaken.
 - iv) The committee will monitor and review the progress of activities undertaken/completed from time to time.
- d) Delegation of Power (DOP) for according approval of any CSR project proposal would be as under:
 - CSR projects/ programmes/ activities upto Rs. 25.00 lakhs (Rupees Twenty Five Lakhs) shall be approved by the CMD of CMPDI and proposals beyond Rs. 25.00 lakhs shall be approved by respective Boards.

IX. BASE LINE SURVEY & DOCUMENTATION

- a) Keeping in view the DPEs guidelines baseline survey is not insisted upon in every case and flexibility would be granted to opt other method including use of in house expertise and resources for need assessment studies.
- b) The CSR activities for providing infrastructure facilities like medical college, institution, where social benefit is involved, baseline survey is not required, The cost benefit and justification for any project has to be ascertained.
- c) Meticulous documentation relating to CSR approaches policies, programs, expenditures, procurement etc. should be prepared and put in the Public Domain, (particularly through the internet) and made available to CMPDI Website.

X. MONITORING

- a) The CSR committee of CMPDI or their representatives shall monitor the progress of work of ongoing projects from time to time and case to case basis or/ the monitoring may be carried out by External Reputed Agency.
- b) The CSR Cell constituted at CMPDI should be headed by an E/8 level officer and will prepare the Annual Report on CSR activities for placing the same before CSR & Sustainable Development Committee.
- c) Board Level Committee on CSR and Sustainable Development of CMPDI shall review the implementation of CSR activities in every six months and recommend the amount of expenditure to be incurred on CSR activities.
- d) The CSR committee shall monitor the Corporate Social Responsibility policy from time to time.
- e) If the company fails to spend the allocated budget in a particular year, the company shall specify the reasons for not spending the amount in the Directors Report.

- f) CMPDI shall include a separate/chapter in the Annual Report on the implementation of CSR activities/project including the fact relating to physical and financial progress.
- g) Utilization Certificate with statement of expenditure duly certified by a practicing Chartered Accountant/ Authorized Auditor will be submitted by the Organization/ Institution to whom CSR fund is allocated.

MAJOR AREAS OF CSR & SUSTAINABILITY

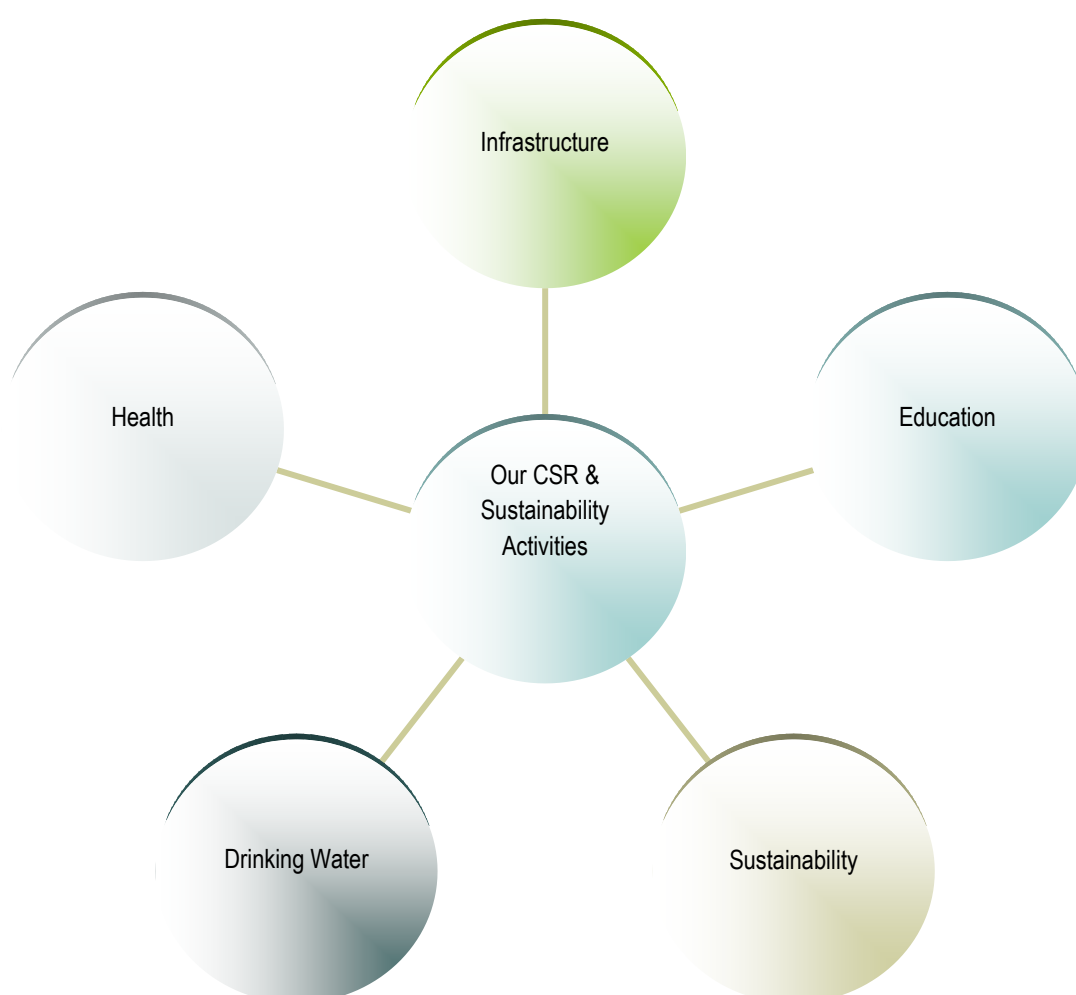
INFRASTRUCTURE DEVELOPMENT

EDUCATION

HEALTH-CARE

SUSTAINABILITY

DRINKING WATER



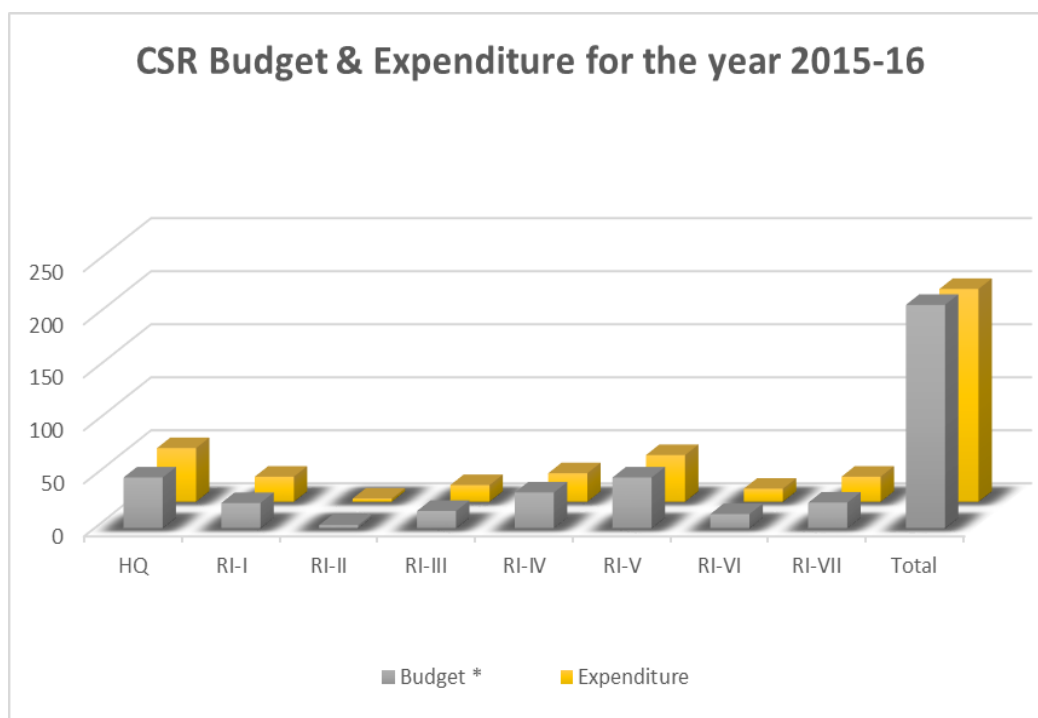
LAST 2 YEARS CSR BUDGET & EXPENDITURE

Year wise fund utilized in CSR & Sustainability activities

Unit of CMPDI	Year wise fund utilized in CSR & Sustainability activities (Rs in Lakhs)			
	2014-15		2015-16	
	Budget	Expenditure	Budget *	Expenditure
HQ	53.32	80.78	47.94	50.72
RI-I	14.65	8.38	23.89	23.74
RI-II	2.10	2.06	3.00	3.01
RI-III	14.00	13.25	16.34	15.87
RI-IV	29.20	28.48	33.79	27.01
RI-V	42.70	14.06	48.02	44.18
RI-VI	16.75	16.21	13.45	12.4
RI-VII	38.27	17.7	24.25	23.79
Total	210.99	180.92	210.68	200.72

* Budget Restricted to Rs. 200.00 Lakhs only

CSR Budget & Expenditure for 2015-16



HEAD WISE EXPENDITURE ON CSR & SUSTAINABILITY

Sl. No.	Areas	2013-14 (Rs. In Lakhs)	2014-15 (Rs. In Lakhs)	2015-16 (Rs. In Lakhs)
1	Education	33.39	53.27	36.78
2	Infrastructure	119.7	56.78	143.04
3	Water Supply	6.18	2.32	3.39
4	Health	-	51.70	10
5	Women Empowerment/ Skill Development	0.12	2.46	2.08
6	Social Development	7.85	0.82	2.97
7	Sustainability	33.22	12.53	1.15
8	others	0.91	1.04	1.32
	Total	201.37	180.92	200.73

CSR & SUSTAINABILITY ACTIVITIES

As we have already stated here and in our previous CSR Report, we, at CMPDI believe that our CSR and Sustainability activities should address social, economic and environmental concerns and their selection has to be based on their social, economic and environmental impact thereof, rather than mere output or outcomes. CMPDI actively contribute to the social and economic development of the communities in which we operate. In doing so, build a better, sustainable way of life for the weaker sections of society and contribute to raise the country's human development index.

It is expected from us that we being a socially responsible public sector enterprise, would take initiatives to promote organizational integrity and ethical business practices through transparency in disclosure and reporting procedures, and contribute to inclusive growth and equitable development in society through capacity building measures, empowerment of the marginalized and underprivileged sections / communities.

Our focus is on the all-round development of the communities around our drilling sites located mostly in rural areas and tribal belts. CMPDI (HQ) and all our Regional institutes (I to VII) have CSR Committee which are the implementation bodies.

Our partners in development are government bodies, district authorities, village panchayats and the end beneficiaries — the villagers.

All projects are planned in a participatory manner, in consultation with the community, literally sitting with them, and gauging their basic needs; after discussion with the village panchayats we priorities the requirements.

Our CSR & Sustainability activities focus areas are Infrastructure, Education, Drinking water, Women/Skill Development, Social Development, Health & Sustainability.

CMPDI reiterates its commitment to social responsibility towards CSR & sustainability by integrating social and environmental concerns in day-to-day business operations. Our Board Level CSR committee for financial year 2015-16 was chaired by Independent Director with Director (T/CRD) & Director (T/P&D) as its members.

Keeping in view the special nature of its business, CMPDI has initiated its CSR & Sustainability activities and an overview of our activities pursued in 2015-16 is enlisted in the following pages.

HIGHLIGHTS OF CSR ACTIVITIES

[a] Education:

Educational support like supply of Desk-Benches, School Dress, financial support/ assistance in the form of scholarship are being provided by CMPDI to many schools.

- 1 Financial Assistance for celebration of Annual day, Sports Day, Independence Day & Republic Day at Gondwana Primary School, Kanke Road, Ranchi, Jharkhand



- 2 Financial Assistance for celebration of Annual day, Sports Day, Independence Day & Republic Day at Birsa High School, Kanke Road, Ranchi, Jharkhand



- 3 Supply of 60 sets of Desk-benches, Sport Materials and Ceiling fans (25 nos.) for the students of Adivasi Bal Vikas Vidhyalaya, Gadhdipa, Sarsa, Lapung, Ranchi, Jharkhand



- 5 Distribution of school Dress to (190 Sets) students of Birsa High School, Kanke Road, Ranchi, Jharkhand



- 6 Distribution of & Ceiling fans (20 nos.) & Almirahs (5 nos.) for the students of Bharat Sevashram Sangha, Tupudana, Ranchi, Jharkhand



- 7 Carpet for the students of Gondwana Primary School & Birsa High School, Kanke Road, Ranchi, Jharkhand.



- 8 Payment of school fees to 24 nos. of Poor & Meritorious students of Gondwana Primary School, Ranchi & 39 nos. of Poor & Meritorious students of Birsa High School, Ranchi.



- 9 Distribution of Almirahs (1 nos.) & Book shelves (2 nos.) for the students of Pramathanath Vidyalaya, Hinoo, Ranchi, Jharkhand



- 10 Distribution of School Dress (1 set) to 95 girls students and 95 boys students of Birsa High School, Ranchi, Jharkhand.



- 11 Distribution of Steel Table & Chairs (2 nos. each) and desk-benches (50 nos.) to Gondwana Primary School, Ranchi, Jharkhand.



- 12 Distribution of School Dress (2 sets) will be provided to 30 students of Asansol Braille Academy, Asansol, West Bengal under CSR.



- 13 Distribution of 3-seater Desk and Benches to Primary Schools, Santhal Danga F.P. School, Aradanga, Joredanga F.P. School & Gopalpur F.P. School of Asansol, BISS Primary School of Kulti, West Bengal.



- 14 Distribution of 50 sets of Desks & Benches (5 Seater, Steel frame) to Ethora Shrish Chandra Institution, West Bengal under CSR.



- 15 Distribution of (20 nos.) Desk-Bench at Rajkiyakrit Prathamik Vidyalaya, Nutandih, Dhanbad and Distribution of (50 nos.) Desk-Bench at Wariya Buniyadi Vidyalaya, Jagjiwan Nagar, Dhanbad, Jharkhand.



- 16 Distribution of (50 nos.) Desk-Bench at Urdu and Hindi Vidyalaya, Naya Bazar, Dhanbad, Jharkhand.



- 17 Distribution of Desk-Bench (200 nos.) in different govt. schools of Bhagiya Panchayat, Balumath, Latehaar, Jharkhand under CSR.



- 18 Distribution of (50 nos.) Desk-Bench at Rajkiya Madya Vidyalaya, Orla. Mandu, Ramgarh and Distribution of (50 nos.) Desk-Bench at U.M.S. Jobla, Mandu, Ramgarh, Jharkhand under CSR.



- 19 Distribution of Sweaters in Bal Nikunj Primary School, Jaripatka, Nagpur, Maharashtra under CSR.



- 20 Distribution of (145 nos.) of three seater Wooden Desk & Benches and Wooden Tables (15 nos.), Chairs (15 nos.) and Steel Almirahs (5 nos.) to Shashakiya Uchchatar Madhyamik Vidyalaya, Tingudi, Singrauli, Madhya Pradesh under CSR.



- 21 Distribution of (50 nos.) of three seater wooden Desk & Benches and Wooden Tables (14 nos.), Chairs (07 nos.) and Steel Almirahs to Shashakiya Purv Madhyamik Vidyalaya, Amjhar, singrauli, Madhya Pradesh under CSR.



[b] Infrastructural Support:

Several infrastructural projects in the form of School Class Room, Community Hall, Shed, and Toilets etc. have been constructed by CMPDI in various locations:

- 1 Construction of Hostel-cum-Computer Center for Blind Girls Students of Braj Kishore Netraheen Balika Vidyalaya, Bariyatu, Ranchi, Jharkhand (under construction).
- 2 Construction of Toilet for girl students with bore well at Pramathanath Madhya Vidyalaya, Hinoo, Ranchi, Jharkhand (under construction).
- 3 Construction of Boundary wall with Gate for Aradanga Jordanga F P School, Kalla Central Hospital, Burdwan, West Bengal under CSR (Spillover activities from 2014-15).



- 4 Construction of Cultural hall with Hand Pump at Balitora village, Madhukunda Block, Purulia, West Bengal under CSR.



- 5 Construction of Shed-sum-Platform in Orla Village, Ramgarh, Jharkhand and Construction of Shed in Dhaviya Village, Bokaro, Jharkhand under CSR.



- 6 Construction of Mid-Day Meal Shed with stage in Zilla Parishad Higher Primary School, Anandvan, Warora, Chandrapur, Maharashtra under CSR.



- 7 Construction of Boundary Wall in Zilla Parishad Higher Primary School, Anandvan, Warora, Chandrapur, Maharashtra under CSR.



- 8 Construction of Library Room in Zilla Parishad Higher Primary School, Bandar (c) Chimur, Chandrapur, Maharashtra under CSR.



- 9 Construction of Boundary wall (205.00 meter in Moorumkhadan School, Khamtarai Village, Chhattisgarh under CSR.



- 10 Construction of Kalyan Mandap at Kosala village, Odisha under CSR



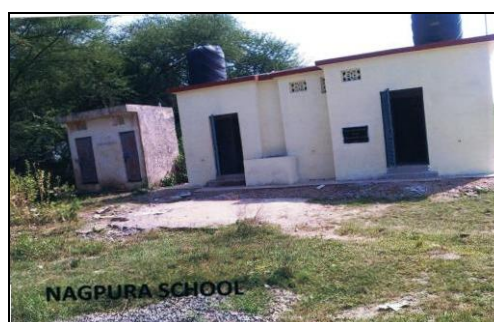
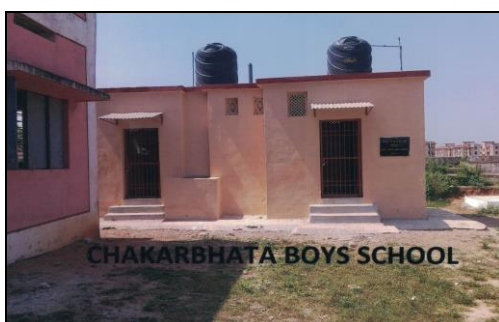
- 11 Construction of toilets in Zilla Parishad School, Wagholi, Nagpur, Maharashtra and Construction of toilets in Zilla Parishad School, Rajura, Nagpur, Maharashtra under CSR. under CSR.



- 12 Constuction of 2 nos. of toilet blocks in Govt. High School in Lingiadih, Chhattisgarh under CSR (under Construction).



- 13 Construction of 4 nos. of Toilets at 1) Govt. Secondary School, Khamtra, 2) Govt. Secondary School, Nagpura, 3) Govt. Girls Hr. Sec. School, Chakarbhata and 4) Govt. Boys Hr. Sec. school, Chakarbhata, Bilaspur, Chhattisgarh under CSR.





[c] Healthcare:

- 1 Financial Assistance of Rs. 10.00 lakhs to K.C. Roy Memorial Charitable Hospital, Lalpur, Ranchi for Ultrasound Machine.



[d] Sports

- 1 Financial Assistance for organizing Football tournament at Gramin Utthan Sansthan, Sukurhuttu, Ranchi, Jharkhand.



- 2 Financial Assistance of for Organistaion of Sports day at Birsa High school, Kanke Road, Ranchi, Jharkhand.



- 3 Financial Assistance of for Organization of Sports day at Gondwana Primary School school, Kanke Road, Ranchi, Jharkhand.



- 4 Sports Materials like Football, Volleyball, Hockey sticks, Net & Hockey Ball etc. for the students of Adivasi Bal Vikas Vidhyalaya, Gadhdipa, Sarsa, Lapung, Ranchi, Jharkhand.



[e] Social Development:

- 1 Distribution of Uniform (76 nos.), Shoes (76 nos.), Blankets (10 nos.), Bed sheet (76 nos.), Bed with Mattress (36 nos.), Washing machine (1 no.), Fridge (1 no.), Bookshelf (6 nos.), Books & Sports Items etc. to Sri Sri Maa Anand Ashram Near Kalupada Ghata, Damana, Chandrasekharpur, Bhubaneswar



[f] **Skill Development / Women Empowerment:**

CMPDI started women empowerment initiative by providing the skill development programme to the women, keeping in view protecting the downtrodden and neglected women in the society.

- 1 Sponsorship of 10 nos. of blind girls of Braj Kishore Netraheen Balika Vidyalaya, Ranchi for skill development training programme for a period of 1 year.



- 2 Distribution of Sewing machine (06 nos.) with training facility to the Women's of Mahila Samiti of Hatma Village, Ranchi, Jharkhand. (CSR activity from 2014-15).



- 3 Distribution of (6 nos.) of sewing Machine to Bhagiya Panchayat, Latehaar, Jharkhand for Women's Development under CSR.



[g] Drinking Water:

- 1 Drilling and Installation of borewell (3 nos.) at Kosala Village & Kaithadhipa Village, Anugul, Odisha,



- 2 Construction of one tube well with pump set in the village Lagra, Bilaspur, Chhattisgarh under CSR.



[h] Sustainability:

- 1 Energy conservation by replacing conventional lights by LED lights (60 nos.) at CMPDI Regional Institute-VII colony, Bhubaneswar, Odisha.



FUNDING OF CSR & SUSTAINABILITY ACTIVITIES

The CSR Budget will be mandatorily created through a board resolution as per a percentage of net profit in the following manner:

Types of CPSE's Net profit (Previous Year)	Expenditure range for CSR in a financial year (% of profit)
1) Less than Rs. 100 crore	3% - 5 %
2) Rs. 100 crore to Rs. 500 crore	2% - 3% (Subject to a minimum of Rs. 3 crore)
3) Rs. 500 crore and above	0.5% - 2%

Year	PAT in Rs. Crores
2012-13	25.05
2013-14	19.57
2014-15	25.04
Average	23.22

As per CIL guidelines the fund for the CSR as 2% of average net profit of the company, which comes to Rs. 46.44 lakhs only. After the special approval of competent authority, CMPDI allotted a fund of Rs. 200 lakhs under CSR & Sustainability activities for the year 2015-16.

ACTIVITY WISE CSR EXPENDITURE FOR THE YEAR 2015-16

CSR Budget & Expenditure for the year 2015-16							
1	2	3	4	5	6	7	8
Sl. No.	CSR Project or activity identified.	Sector in which the project is covered.	Projects or Programs 1) Local Area or other state district where projects or programs was undertaken.	Amount outlay (Budget) Project or program wise	Amount spent on the projects or programs Sub-Heads: 1) Direct expenditure on projects or programs. 2) Overheads	Cumulative expenditure upto to the reporting period	Amount spent: Direct or through implementing agency
1	Construction of Hostel-cum Computer center for blind girl students of Braj Kishore Netraheen Balika Vidyalaya.	Infrastructure	Ranchi, Jharkhand	21.00000	Direct Expenditure	12.00000	Direct
2	Construction of Toilet for Girl students with bore well at Pramathanath Madhya Vidyalaya, Hinoo, Ranchi, Jharkhand	Infrastructure	Ranchi, Jharkhand	5.00000	Direct Expenditure	Spill-over to 2016-17	Direct
3	Women empowerment proposal of Hatma Mahila Sangharsh Sansthan, Ranchi, Jharkhand	Women Empowerment	Ranchi, Jharkhand	1.56000	Direct Expenditure	Spill-over to 2016-17	Direct
4	Distribution of Fans (20 nos.) & Almirahs (5 nos.) to Bharat Sevashram Sangha, Devi Mandap Road, Tupudana, Hatia, Ranchi, Jharkhand	Education	Ranchi, Jharkhand	0.62000	Direct Expenditure	0.61750	Direct
5	Gondwana Primary School, Ranchi	Education	Ranchi, Jharkhand	1.83000	Direct Expenditure	1.82310	Direct
	Republic day						
	Independence day						
	Annual day						
	School fees						
	Desk & Benches - 50 nos.						
	Table & Chairs-2 nos.						
6	Birsa High School, Ranchi	Education	Ranchi, Jharkhand	2.00000	Direct Expenditure	2.11750	Direct
	Republic day						
	Independence day						
	School fees						
	School uniform						

CSR Budget & Expenditure for the year 2015-16							
1	2	3	4	5	6	7	8
7	Distribution of Desk & Benches (60 nos.) to Adavasi Bal Vikas Vidhayala, Lapung, Ranchi, Jharkhand	Education	Ranchi, Jharkhand	1.20000	Direct Expenditure	1.18200	Direct
8	Distribution of Sports items like Football - 10 nos., Hockey kit sets - 2 sets, Volleyball, Net etc. for the students of Adavasi Bal Vikas Vidhayala, Lapung, Ranchi, Jharkhand	Education	Ranchi, Jharkhand	0.20000	Direct Expenditure	0.19740	Direct
9	Distribution of Ceiling Fans (25 nos.) to Adivasi Bal Vikas Vidyalaya, Gadhippa, Sarsa, Lapung, Ranchi, Jharkhand	Education	Ranchi, Jharkhand	0.40000	Direct Expenditure	0.38750	Direct
10	Distribution of Desk-Bench (30 nos.) to Utkramit Prathamik Vidyalaya, Mahadev Toli, Chutiya, Ranchi and (30 nos.) to Nav Prathamik Vidyalaya, Dhumsa Toli, Chutiya, Ranchi, Jharkhand	Education	Ranchi, Jharkhand	1.20000	Direct Expenditure	Spill-over to 2016-17	Direct
11	Carpet (900 sq. ft.) to Birsa High School, Ranchi and Carpet (700 sq. ft.) Gondwana Primary School, Ranchi, Jharkhand	Education	Ranchi, Jharkhand	0.32000	Direct Expenditure	0.27660	Direct
12	Distribution of Steel Almirahs (1 no.) & Book Shelves (2 nos.) to Pramathanath Madhya Vidyalaya, Hinoo, Ranchi, Jharkhand	Education	Ranchi, Jharkhand	0.18000	Direct Expenditure	0.17150	Direct
13	Skill Development project for the 10 Blind Students of Braj Kishore Netraheen Balika Vidhayalaya, Bariyatu, Ranchi, Jharkhand	Skill Development	Ranchi, Jharkhand	1.80000	Direct Expenditure	1.80000	Direct
14	Financial assistance for installation of Ultrasound Machine to K. C. Roy Memorial Charitable Hospital, Ranchi, Jharkhand	Health	Ranchi, Jharkhand	10.00000	Direct Expenditure	10.00000	Direct

CSR Budget & Expenditure for the year 2015-16							
1	2	3	4	5	6	7	8
15	Financial assistance for organizing Football Tournament for boys & Girls by Gramin Utthan Sahyog Sanstha, Kanke, Ranchi, Jharkhand	Sports	Ranchi, Jharkhand	0.25000	Direct Expenditure	0.25000	Direct
16	Financial assistance for annual sports day to Birsa High School, Ranchi, Jharkhand	Sports	Ranchi, Jharkhand	0.20000	Direct Expenditure	0.20000	Direct
17	Financial assistance for sports day to Gondwana Primary School, Ranchi, Jharkhand	Sports	Ranchi, Jharkhand	0.08000	Direct Expenditure	0.08000	Direct
18	Financial assistance for organizing football tournament by Khel Vikas Samiti, Kanke Road, Ranchi, Jharkhand	Sports	Ranchi, Jharkhand	0.10000	Direct Expenditure	Dropped	Direct
19	Construction of 3 nos. of Classrooms at Birsa High School, Kanke Road, Ranchi, Jharkhand (CSR activity of F.Y. 2012-13)	Infrastructure	Ranchi, Jharkhand	Spill over activity	Direct Expenditure	19.52000	Direct
20	Miscellaneous/ Photography Charges	Others	Ranchi, Jharkhand	-	Direct Expenditure	0.10000	Direct
21	Construction of Boundary wall with grill gate for Aradanga Jordanga FP School, Kalla Central Hospital, Burdwan, West Bengal. (spillover activity)	Infrastructure	Burdwan, West Bengal	6.85000	Direct Expenditure	6.84106	Direct
21	Construction of Cultural hall and tube well with a hand pump is to be constructed at Balitora village, Madhukunda Block, Purulia, West Bengal	Infrastructure	Purulia, West Bengal	8.40000	Direct Expenditure	8.37329	Direct
22	Sponsorship of 10 (Ten) students who are physically & mentally retarded, hearing impaired etc. of Asansol Anandam, West Bengal	Education	Burdwan, West Bengal	1.35000	Direct Expenditure	1.35000	Direct

CSR Budget & Expenditure for the year 2015-16							
1	2	3	4	5	6	7	8
23	Supply of 50 sets of Desks and Benches (5 seater, steel frame) to Ethora Shrish Chandra Institution, Asansol West Bengal.	Education	Burdwan, West Bengal	1.74000	Direct Expenditure	1.73696	Direct
24	Reimbursement of electricity charges especially for hydro-therapy & physiotherapy purposes of the students of Asansol Anandam for the year 2015-16.	Education	Burdwan, West Bengal	1.20000	Direct Expenditure	1.20000	Direct
25	Distribution of Two sets of uniform to (30 nos.) of students of Asansol Braille Academy, West Bengal.	Education	Burdwan, West Bengal	0.35000	Direct Expenditure	0.34565	Direct
26	Distribution of 3-seater Desk & Benches to different Primary Schools, Santadanga F.P. School, Aradanga, Joredanga F.P. School & Gopalpur F.P.School of Asansol, BISS Primary School of Kulti, W.B.	Education	Burdwan, West Bengal	4.00000	Direct Expenditure	3.32000	Direct
27	Miscellaneous/ Photography Charges	Others	West Bengal	-	Direct Expenditure	0.11470	Direct
28	Construction of Boundary wall at Malekolo Madhyamik Vidyalaya (CSR work of F.Y. 2014-15) amount paid in current year.	Infrastructure	Burdwan, West Bengal	Spill over activity	Direct Expenditure	0.53946	Direct
29	Excess Provision from F.Y. 2014-15 reversed	Others	West Bengal	Spill over	Direct Expenditure	-0.08000	Direct
30	Donation of old items as per approval of competent authority under CSR activities (Recorded at nominal value of Rs. 1/- each)	Others	West Bengal	Nil	Direct Expenditure	0.00136	Direct
31	Distribution of (20 nos.) Desk-Bench at Rajkiyakrit Prathamik Vidyalaya, Nutandih, Dhanbad	Education	Dhanbad, Jharkhand	3.00000	Direct Expenditure	2.98280	Direct
32	Distribution of (50 nos.) Desk-Bench at Urdu and Hindi Vidyalaya, Naya Bazar, Dhanbad						Direct

CSR Budget & Expenditure for the year 2015-16							
1	2	3	4	5	6	7	8
33	Distribution of (50 nos.) Desk-Bench at Wariya Buniyadi Vidyalaya, Jagjiwan Nagar, Dhanbad						Direct
34	Miscellaneous/ Photography Charges	Others	Dhanbad, Jharkhand	-	Direct Expenditure	0.03000	Direct
35	Distribution of (100 nos.) of Desk bench in different govt. schools of Bhagiya Panchayat like Shanti, Keri, Sardamtola, Pandariya, Dumartola, Salichanva, Khuter, Barvatoli and Turi Tard, Jharkhand	Education	Latehar, Jharkhand	2.00000	Direct Expenditure	1.99500	Direct
36	Distribution of (100 nos.) of Desk bench in different govt. schools of Bhagiya Panchayat, Jharkhand	Education	Latehar, Jharkhand	2.00000	Direct Expenditure	1.99500	Direct
37	Distribution of 50 nos. of Desk bench in U.M.S., Jobla Mandu, Ramgarh, Jharkhand	Education	Ramgarh, Jharkhand	1.20000	Direct Expenditure	1.97000	Direct
38	Distribution of 50 nos. of Desk bench in Rajkiya Madhya Vidyalaya, Orla, Mandu, Ramgarh, Jharkhand	Education	Ramgarh, Jharkhand	1.20000	Direct Expenditure		Direct
39	Construction of Shed (Size 30'x30') in Dhaviya village, Bokaro, Jharkhand	Infrastructure	Ramgarh, Jharkhand	6.00000	Direct Expenditure	5.83749	Direct
40	Construction of Shed in Orla village, Orla, Ramgarh, Jharkhand	Infrastructure	Ramgarh, Jharkhand	3.64000	Direct Expenditure	3.60330	Direct
41	Sewing Machine for Women in Bagiya Panchayat, Balumath, Latehar, Jharkhand	Women Empowerment	Latehar, Jharkhand	0.30000	Direct Expenditure	0.27790	Direct
42	Excess Provision from 2014-15	Others	Jharkhand	-	Direct Expenditure	0.19051	Direct
43	Construction of toilets in Zilla Parishad School, Wagholi, Nagpur, Maharashtra (spillover activity)	Infrastructure	Nagpur, Maharashtra	0.55000	Direct Expenditure	0.31096	Direct
44	Construction of toilets in Zilla Parishad School, Rajura, Nagpur, Maharashtra (spillover activity)	Infrastructure	Chandrapur, Maharashtra	2.90000	Direct Expenditure	2.60052	Direct

CSR Budget & Expenditure for the year 2015-16							
1	2	3	4	5	6	7	8
45	Construction of Library Room in Zilla Parishad Higher Primary School, Bandar (C) Chimur, Chandrapur, Maharashtra	Infrastructure	Chandrapur, Maharashtra	5.10000	Direct Expenditure	5.04350	Direct
46	Construction of Stage in Zilla Parishad Higher Primary School, Bandar (C)Chimur, Chandrapur, Maharashtra	Infrastructure	Chandrapur, Maharashtra	5.30000	Direct Expenditure	5.14901	Direct
47	Construction of Compound Wall in Zilla Parishad Higher Primary School, Anandvan, Warora, Chandrapur, Maharashtra	Infrastructure	Chandrapur, Maharashtra	14.60000	Direct Expenditure	14.31582	Direct
48	Construction of Mid-day Meal Stage with Shed in Zilla Parishad Higher Primary School, Anandvan, Warora, Chandrapur, Maharashtra	Infrastructure	Chandrapur, Maharashtra		Direct Expenditure		Direct
49	Distribution of Chair & Tables (22 nos.) to Zilla Parishad Uchh Prathmik Shala, Nandori Panchayat Samiti, Bhadravati Zilla Parishad, Chandrapur, Maharashtra	Education	Chandrapur, Maharashtra	0.77000	Direct Expenditure	Spill-over to 2016-17	Direct
50	Distribution of Sweaters in Bal Nikunj Primary School, Jaripatka, Nagpur, Maharashtra	Education	Nagpur, Maharashtra	0.26000	Direct Expenditure	0.25620	Direct
51	Distribution of Desk-benches (50 nos.) to Zilla Panchayat Uchh Prathmik Shala, Anandvan, Warora, Chandrapur, Maharashtra	Education	Chandrapur, Maharashtra	1.75000	Direct Expenditure	Spill-over to 2016-17	Direct
52	Distribution of Desk-benches (50 nos.) to Zilla Panchayat Uchh Prathmik Shala, Kolar, Chimur, Chandrapur, Maharashtra	Education	Chandrapur, Maharashtra	1.75000	Direct Expenditure	Spill-over to 2016-17	Direct
53	Distribution of Desk-benches (23 nos.) to Zilla Parishad Prathmik Shala, Nandora, Maharashtra	Education	Nandora, Maharashtra	0.81000	Direct Expenditure	Spill-over to 2016-17	Direct
54	Service Tax on CSR Work	Others	Maharashtra	-	Direct Expenditure	0.52183	Direct
55	Excess Provision from the	Others	Maharashtra	-	Direct	-1.18817	Direct

CSR Budget & Expenditure for the year 2015-16							
1	2	3	4	5	6	7	8
	year 2014-15 Reversed				Expenditure		
56	Construction of (4 nos.) of Toilets at 1) Govt. Secondary School, Khamtra, 2) Govt. Secondary School, Nagpura, 3) Govt. Girls Hr. Sec. School, Chakarbhata and 4) Govt. Boys Hr. Sec. school, Chakarbhata, Bilaspur, Chhattisgarh (spillover activity from 2014-15)	Infrastructure	Bilaspur, Chhattisgarh	27.27096	Direct Expenditure	30.32283	Direct
57	Construction of 01 no. toilet block in Govt. Naveen Primary School with 205.00 meter Boundary wall in Moorumkhadan school, Khamtarai village, Chhattisgarh	Infrastructure	Bilaspur, Chhattisgarh	8.00000	Direct Expenditure	7.54098	Direct
	Electrical wiring of rooms of Moorum Khadan School at Khamtarai Village, Chhattisgarh	Infrastructure	Bilaspur, Chhattisgarh		Direct Expenditure	0.36867	Direct
58	Construction of 2 nos. of toilet blocks in Govt. High School in Lingadih, Chhattisgarh (Partly completed and Partly Spill over to 2016-17)	Infrastructure	Bilaspur, Chhattisgarh	10.00000	Direct Expenditure	2.88727	Direct
59	Supply of (5 nos.) tables, (5nos.) chairs & Ceiling fans (6 nos.) in Moorumkhadan School, Khamtarai Village, Chhattisgarh	Education	Bilaspur, Chhattisgarh	0.25000	Direct Expenditure	0.45400	Direct
60	Construction of one tubewell with pump set in the village Lagra, Bilaspur, Chhattisgarh	Drinking water	Bilaspur, Chhattisgarh	2.50000	Direct Expenditure	2.52505	Direct
61	Miscellaneous/ Photography Charges	Others	Bilaspur, Chhattisgarh	-	Direct Expenditure	0.08500	Direct
62	Supply of (145 nos.) of three seater Wooden Desk & Benches to Shashakiya Uchchatar Madhyamik Vidyalaya, Tingudi, Singrauli, MP	Education	Singrauli, Madhya Pradesh	9.70000	Direct Expenditure	8.76525	Direct
63	Supply of (50 nos.) of three	Education	Singrauli,		Direct		Direct

CSR Budget & Expenditure for the year 2015-16							
1	2	3	4	5	6	7	8
	seater wooden Desk & Benches to Shashakiya Purv Madhyamik Vidyalaya, Amjhar, Singrauli, MP		Madhya Pradesh		Expenditure		
64	Supply of Wooden Tables (15 nos.), Chairs (15 nos.) and Steel Almirahs (5 nos.) to Shashakiya Uchchatar Madhyamik Vidyalaya, Tingudi, Singrauli, MP	Education	Singrauli, Madhya Pradesh	3.75000	Direct Expenditure	3.63280	Direct
65	Supply of Wooden Tables (14 nos.), Chairs (07 nos.) and Steel Almirahs to Shashakiya Purv Madhyamik Vidyalaya, Amjhar, Singrauli, MP	Education	Singrauli, Madhya Pradesh		Direct Expenditure		Direct
66	Drilling & Installation of 3 nos. of Borewell at Kosala, Kaitha Dhipa & Barpada Villages near Kosala Camp (spillover activity)	Drinking water	Anugul, Odisha	0.90000	Direct Expenditure	0.87000	Direct
67	Construction of Kalyan Mandap at Kosala village (spillover activity)	Infrastructure	Anugul, Odisha	18.35000	Direct Expenditure	18.34000	Direct
68	Distribution of Uniform (76 nos.), Shoes (76 nos.), Blankets (10 nos.), Bed sheet (76 nos.), Bed with Mattress (36 nos.), Washing machine (1 no.), Fridge (1 no.), Bookshelf (6 nos.), Books & Sports Items etc. to Sri Sri Maa Anand Ashram Near Kalupada Ghata, Damana, Chandrasekharapur, Bhubaneswar, Odisha	Education	Bhubaneswar Odisha	3.60000	Direct Expenditure	2.97000	Direct
69	Replacement of Five old windows and two doors at Shradda Organization, Near Mahanadi, Naraj, Cuttack, Odisha	Infrastructure	Bhubaneswar Odisha	0.20000	Direct Expenditure	Spill-over to 2016-17	Direct
70	Miscellaneous/ Photography Charges	Others	Bhubaneswar Odisha		Direct Expenditure	0.46000	Direct
	Grand Total			*209.48096		199.57910	

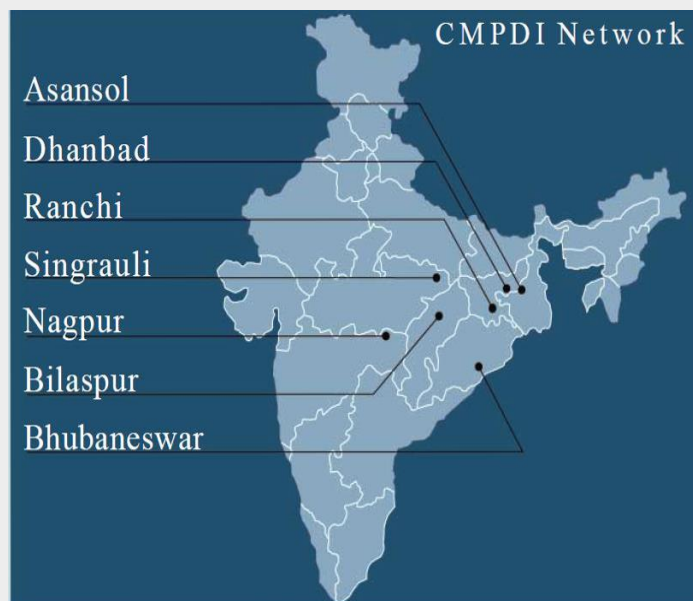
- **Budget was limited to Rs. 200 Lakhs only**

SUSTAINABILITY EXPENDITURE FOR THE YEAR 2015-16

Sustainability Budget & Expenditure for the year 2015-16							
1	2	3	4	5	6	7	8
S. No.	CSR Project or activity identified	Sector in which project is covered	Projects or Programs 1) Local Area or other 2) Specify the state district where projects or programs was undertaken	Amount outlay (Budget) Project or program wise	Amount spent on the projects or programs Sub-Heads: 1) Direct expenditure on projects or programs 2) Overheads	Cumulative expenditure upto to the reporting period	Amount spent: Direct or through implementing agency
1	Energy Conservation by installing LED Lights 60 nos. at Bhubaneswar Odisha under CSR & Sustainability.	Sustainability	Bhubaneswar Odisha	1.20000	Direct Expenditure	1.15000	Direct
	Total			1.20000		1.15000	

A responsibility statement of the CSR committee that the implementation and monitoring of CSR Policy, is in compliance with CSR objectives and policies of the company.

		Not Applicable
(Sri Shekhar Saran) Chairman-cum-Managing Director, CMPDIL	(Sri Rakesh Kumar Mittal) Chairman CSR Committee, CMPDIL	(Persons specified under clause (d) of sub-section (1) of section 380 of the act.) (wherever applicable)



Regional Institute - I

West End, G.T.Road, Asansol - 713 301 (WB), India

Tel: +91 341 2253504 Fax: +91 341 2250935 Email: ri1@cmpdi.co.in

Regional Institute - II

Koyla Bhawan, Koyla Nagar, Dhanbad - 826 005 (Jharkhand), India

Tel: +91 326 2230789 Fax: +91 326 2230500 Email: ri2@cmpdi.co.in

Regional Institute - III

Gondwana Place, Kanke Road, Ranchi - 834 031 (Jharkhand), India

Tel: +91 651 2231506 Fax: +91 651 2231501 Email: ri3@cmpdi.co.in

Regional Institute - IV

Kasturba Nagar, Jaripatka, Nagpur - 440 014 (Maharashtra), India

Tel: +91 712 2642134 Fax: +91 712 2643231 Email: ri4@cmpdi.co.in

Regional Institute - V

SECL Complex, Seepat Road, Bilaspur - 495 006 (Chhattisgarh), India

Tel: +91 7752 246482 Fax: +91 7752 246481 Email: ri5@cmpdi.co.in

Regional Institute - VI

P.O. Jayant Colliery, Distt. – Singrauli, PIN: 486 890 (Madhya Pradesh), India

Tel: +91 7805 222172, 222329, 277600 Fax: +91 7805 222330 Email: ri6@cmpdi.co.in

Regional Institute - VII

Plot No. E-4, Near Gandhi Park, At Samantapuri, PO: RRL, Bhubaneswar - 751 001 (Odisha), India

Fax: +91 674 2301762 Email: ri7@cmpdi.co.in