

## Unearthing Harmony



February 2014



**Central Mine Planning and Design Institute Limited**

Gondwana Place, Kanke Road, Ranchi-834008

[csr@cmpdi.co.in](mailto:csr@cmpdi.co.in)

<http://www.cmpdi.co.in/csr.php>

## Contents

Introduction .....	1
Challenges for our Stakeholders .....	3
CMPDI – An Overview .....	6
CSR & Sustainability overview: .....	12
CSR & Sustainability Activities .....	17
Health .....	18
Education .....	23
Infrastructure .....	28
Sustainability Activities .....	36
Goals .....	36
Implementation .....	37
Rainwater Harvesting .....	37
Energy Conservation .....	40
Workshop .....	41
Our CSR Work In Media .....	42

*This report indexes CMPDI's 2012-13 corporate-social actions and works towards sustainable development. It is supplemented by information on our website and the CSR and sustainability report document which provides a snapshot of recent activities*

## CMD's message

Corporate Social Responsibility is, in simple words, what and how we give back to our society. Our country is growing by the day at all frontiers. Our growth rate is being marveled upon even by the developed countries. It will not be wrong to say that the coal industry is firing this growth and Coal India is at the centre of it. Growth without development doesn't account for much. CMPDI being a subsidiary of Coal India Limited, very well understands that we have a very delicate job to do. We have to, on one hand keep up with the growing demand of coal to satisfy the needs of a burgeoning population and on the other hand balance the socio-environmental concerns, the coal mining operations cause.



I have said that growth minus actual development of society is only superficial or hollow growth. We must give back to the society from which, frankly, we have taken a lot. And I do not mean giving back to society in a philanthropic sense. Instead our responsibility to our society must lead to building of their capacity to not only sustain themselves but also grow as individuals in order to create a healthy society. To this end, we at CMPDI have figured that infrastructure building is of prime importance. Throughout the year we have strived to build and supply infrastructure facilities for educational institutions and community including deprived sections of our society. Quality education and timely assistance to the disadvantaged people are the pillars of a caring society which wishes to grow in a sustainable manner and we at CMPDI are on our toes to cater to their needs and help ourselves to evolve into such a society.

This report is a vignette of the journey we have voyaged during the financial year 2012-13. It also demonstrates our commitment to our values and the will to maintain the highest ethical standards in carrying out our Corporate Social Responsibility and to enhance our sustainability practices.

During 2012-13, we implemented projects costing Rs.105.92lakhs in the areas of infrastructure development, education, capacity building, health etc. A major portion of our CSR initiatives have been focused on the socio-economic developments in and around our areas of operations which include our drilling camps.

To conclude, I would like to thank our stakeholders for their support and assure them that we are perpetually committed to further improve our CSR and sustainability practices and are dedicated towards building a sustainable and capable community.



(A.K. Debnath)

## Introduction

Corporate Social Responsibility(CSR) is a concept whereby organizations serve the interests of society by taking responsibility for the impact of their activities on customers, employees, shareholders, communities and the environment in all aspects of their operations.

Corporate Social Responsibility is a Company's commitment to operate in an economically, socially and environmentally sustainable manner, while recognizing the interests of its stakeholders. This commitment is beyond statutory requirements. Corporate Social Responsibility is, therefore, closely linked with the practice of *Sustainable Development*.

Corporate Social Responsibility extends beyond philanthropic activities and reaches out to the integration of social and business goals. These activities need to be seen as those which would, in the long term, help secure a sustainable competitive advantage.

It was in United Nations Conference on Environment and Development (the “Earth Summit”),Rio de Janerio, 1992 that the concept of sustainable development evolved.Development requires resources for the production of goods and services. But in recent years it has become evident that the corporate world, which is at the vanguard of growth and development, hasunfortunately become oblivious to the damage it is causing to nature. Also to note is the type of development we are witnessing. Despite the tremendous GDP growth in the past decade, we still have a million peoples in our country who find very hard to make their ends meet. Corporate Social Responsibility is a way to provide or return to the society the fruits of growth that the corporate world has harvested. It is in the core, the underlying principles of CSR and Sustainable development where they are inextricably striving to achieve similar ends. Development of the people by the people and for the people will inevitably lead to a sustainable development where the needs of the future generations will be incorporated even in the nascent stages of all corporate plans. The exploitation of natural resourceshas endangered our future generations’prospects of using the natural resources, thereby imperillingtheir existence. We owe our life and growth to Mother Nature and hence should have a sense of responsibility for preserving it.

In the 21<sup>st</sup> century, Industrial sector can no longer be limited as an arrangement for filling the pockets of shareholders. It has to become a sector in which the management, work force, consumers, and the local populace, all play a part. Especially in our country, where there is a glaring divide between sections of people in terms of income and socio-economic status, the CSR philosophy must address these dimensions. With increasing economic development,exorbitant use of natural resources is inevitable. Also with the increasing population there is bound to be tremendous pressure on using them. But the question is how do we use our resources? We have to hand over the earth with its environment clean and intact to our future generations.So it is binding in us not to exploit our environment beyond its carrying capacity.

Responsible Business is the core of CSR and sustainability and it refers to the commitment of an enterprise to operate in an economically, socially and environmentally sustainable manner while balancing the interests of diverse stakeholders. Stakeholders include employees, investors, shareholders, customers, clients, Government and non-government organizations, local



communities, environment and society at large. CSR has to be viewed as a way of conducting business, which enables the creation and distribution of wealth for the betterment of its stakeholders, through the implementation and integration of ethical systems and sustainable management practices.

We at CMPDI believe that CSR does not emanate directly from external demands but is a process by which our managers think about and evolve our relationships with our stakeholders for the common good, and we demonstrate our commitment in this regard by adoption of appropriate business processes and strategies. We have already emphasized that CSR and sustainable development are two sides of the same coin and so we believe in the philosophy that economic and industrial development must go on in such a way that no irreparable damage be done to the environment. In other words, the rate of consumption and use of natural resources must balance out.



## Challenges for our Stakeholders

Coal, like all other non-renewable sources of energy, has a number of socio-environmental impacts, from both mining and usage. Coal mining raises a number of social as well as environmental challenges. Displacement of people, loss of land, source of income, soil erosion, dust, noise and water pollution, and impact on local biodiversity are major issues being faced by the coal mining industry. Various steps and technological advancements are being implemented in modern coal mining operations to mitigate these challenges.

### Coal Mining & the Environment

Coal mining and particularly surface mining, requires large hectares of land to be temporarily disturbed. This leads to a number of environmental challenges such as soil erosion, dust, noise and water pollution, and impacts on local biodiversity. Coal India Ltd is aware of these challenges and actively initiates steps to minimise impacts on all aspects of the environment. By carefully pre-planning projects, implementing pollution control measures, monitoring the effects of mining and rehabilitating mined areas, the company tries to minimise the impact of its activities on the neighbouring community, the immediate environment and on long-term land capability. Coal mining impacts the environment and ecology to an unacceptable degree, unless carefully planned and controlled. Hence CIL places immense importance to mine planning which is carried out earnestly by CMPDI. We know that some environmental impacts are felt immediately, while others have longer gestation period.

More than half of coal resources in India are located in forest areas. Most coal blocks allocated, have been in or adjoining forest areas. It is anticipated that there will be a tremendous increase in demand for coal. As coal blocks are found in areas inhabited by people, it is quintessential to look after their rehabilitation of project affected families. Also, the problem of loss of forest cover will accentuate as the need to access forest resources will also increase. Loss of forest cover has, as we know, a whole gamut of consequences. It adversely affects the biodiversity and natural ecosystems also compounding the problem of climate change, by reducing the number of sinks for carbon sequestration. Forest areas in many coal producing states are sources of non-timber forest products such as mahua, tendu, chironji, bamboo, mushrooms, etc and hence are a major source of income for the people inhabiting those forests. With the loss of forests for coal mining, communities dependent on these forest resources can possibly lose their traditional sources of livelihood.

### Land Disturbance

Degradation of land is one of the most serious concerns arising from coal mining operations. Mining operations lead to disturbance of land and result in changes in topography and drainage pattern. As India has to ramp up its coal production, there will be large requirement of land for carrying out mining activities. Given the growing unavailability of land in India, there will be problems of land disturbance and also dumping of the waste created. Lack of proper land reclamation and mine closure further compounds the problem of land degradation. To address the above mentioned concerns, CMPDI carries out studies of the immediate environment several years before a coal mine actually opens, in order to define the existing conditions and to identify potential problems. The studies look at the impact of mining on surface and ground water, soils, local land use, native

vegetation and wildlife populations. Computer simulations are undertaken to model impacts on the local environment.

### **Mine Subsidence**

Mine subsidence can be a problem with underground coal mining, whereby the ground level lowers as a result of coal having been mined beneath. A thorough understanding of subsidence patterns in a particular region allows the effects of underground mining on the surface to be quantified. Coal India Limited uses a range of engineering techniques to design the layout and dimensions of its underground mine workings so that surface subsidence can be anticipated and controlled. This ensures the safe, maximum recovery of a coal resource, while providing protection to other land uses.

### **Water Pollution**

Effluents from our coal mine workshops cause contamination and reduce dissolved oxygen level thereby disturbing the ecosystem of nearby small water bodies which in turn pollutes drinking water supply of rural people. Coal India Limited being the leading company in coal industry, incessantly strives to improve its water management in mine operation, aiming to reduce demand through efficiency, technology and the use of lower quality and recycled water. Water pollution is controlled by carefully separating the water runoff from undisturbed areas from polluted water coming from mine works. Clean runoff is discharged into surrounding water courses, while other water is treated and can be reused for dust suppression and in coal preparation plants.

### **Dust & Noise Pollution**

Dust at mining operations can be caused by trucks being driven on unsealed roads, coal crushing operations, drilling operations and wind blowing over areas disturbed by mining. CMPDI suggests mining companies to reduce the dust level by spraying water on roads, stockpiles and conveyors. We also ask them to plant trees in buffer zones which also help in minimizing the impact of dust particles and create a positive impact on psyche of people living in those areas. Also, noise can be controlled through the careful selection of equipment and insulation and sound enclosures around machinery.

### **Rehabilitation of Displaced Community**

Coal India Limited has introduced a liberalised new Resettlement and Rehabilitation Policy, 2012. The objective of the new policy is to provide greater flexibility in resettlement and rehabilitation of people affected by coal mining projects. It attempts to consolidate the different resettlement and rehabilitation practices to determine the rehabilitation packages best suited to local needs.

CMPDI prepares mine plans and we always keep the need of the displaced people in our mind during the planning process. We try to address the apparent increase in air and noise pollution due to mining operations. Coal mining is only a temporary use of land, so it is vital that rehabilitation of land takes place once mining operations have stopped. CMPDI prepares a detailed rehabilitation or reclamation plan which is designed and approved for each coal mine, covering the period from the start of operations until after mining has finished. Mine reclamation activities are undertaken gradually – with the shaping and contouring of spoil piles, replacement of topsoil, seeding with grasses and planting of trees taking place on the mined-out areas. Care is taken to relocate streams, wildlife, and other valuable resources. As mining operations cease in one section of a surface mine, bulldozers and scrapers are used to reshape the disturbed area. Drainage within and off the site is

carefully designed to make the new land surface as stable and resistant to soil erosion as the local environment allows. Based on the soil requirements, the land is suitably fertilized and re-vegetated. Reclaimed land can have many uses, including agriculture, forestry, wildlife habitation and recreation. We carefully monitor the progress of rehabilitation and usually prohibit the use of the land until the vegetation is self-supporting. The cost of the rehabilitation of the mined land is factored into the mine's operating costs.

### **Health and Safety of Workforce**

It is popular belief that coal mine workers lead a difficult life. But due to the dedicated efforts of Coal India Limited this popular dictum no longer holds true. CIL is committed to the safety of the workforce in our mines. Over the years, safety performance of CIL has improved significantly. We are determined to improve the quality of life of all our workers and take every possible step for their well being. Regular health and safety checks are conducted for the workforce and we intend to make these check-ups more frequent.





## CMPDI – An Overview

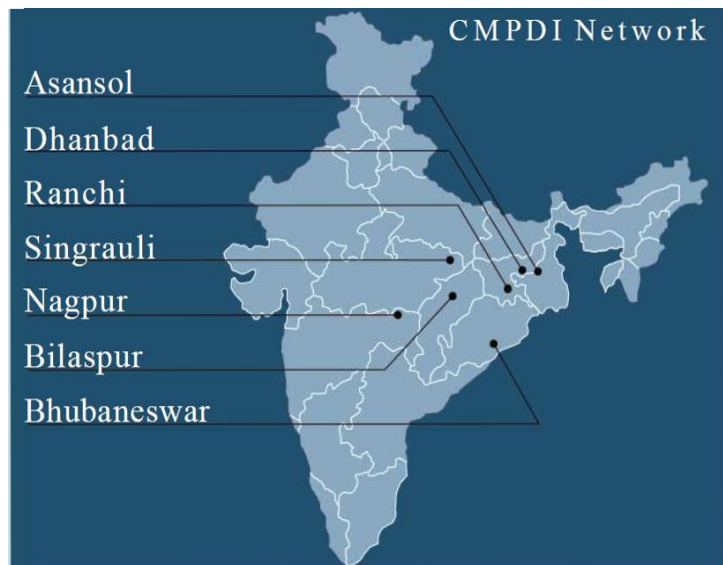


CMPDI (Central Mine Planning & Design Institute Limited), an ISO-9001 company, was established in the year 1975 as a subsidiary of Coal India Limited (a Government of India Public Sector Undertaking) for rendering total consultancy services (i.e. from concept to commissioning) to Coal India Limited and its seven subsidiaries. CMPDI holds the pre-eminent position as the India's largest consultancy organization and the market leader in an expanding earth resource sector and it was accorded the status of Mini Ratna (Cat-II) by the Govt. of India on 29th May, 2009.



CMPDI operates through its headquarters at Ranchi and seven Regional Institutes designated as RI-I to RI-VII located at Asansol, Dhanbad, Ranchi, Nagpur, Bilaspur, Singrauli and Bhubaneswar. Seven Regional Institutes render consultancy services to seven corresponding subsidiaries of CIL viz. ECL (RI-I), BCCL (RI-II), CCL (RI-III), WCL (RI-IV), SECL (RI-V), NCL (RI-VI), & MCL (RI-VII). Consultancy services to CIL (HQ), NEC & non-CIL clients are provided mainly through CMPDI (HQ). CMPDI also handles specialized assignments of Ministry of Coal and CIL.

CMPDI provides consultancy services as also turnkey execution of projects to various organisations in India and abroad.



## Mission

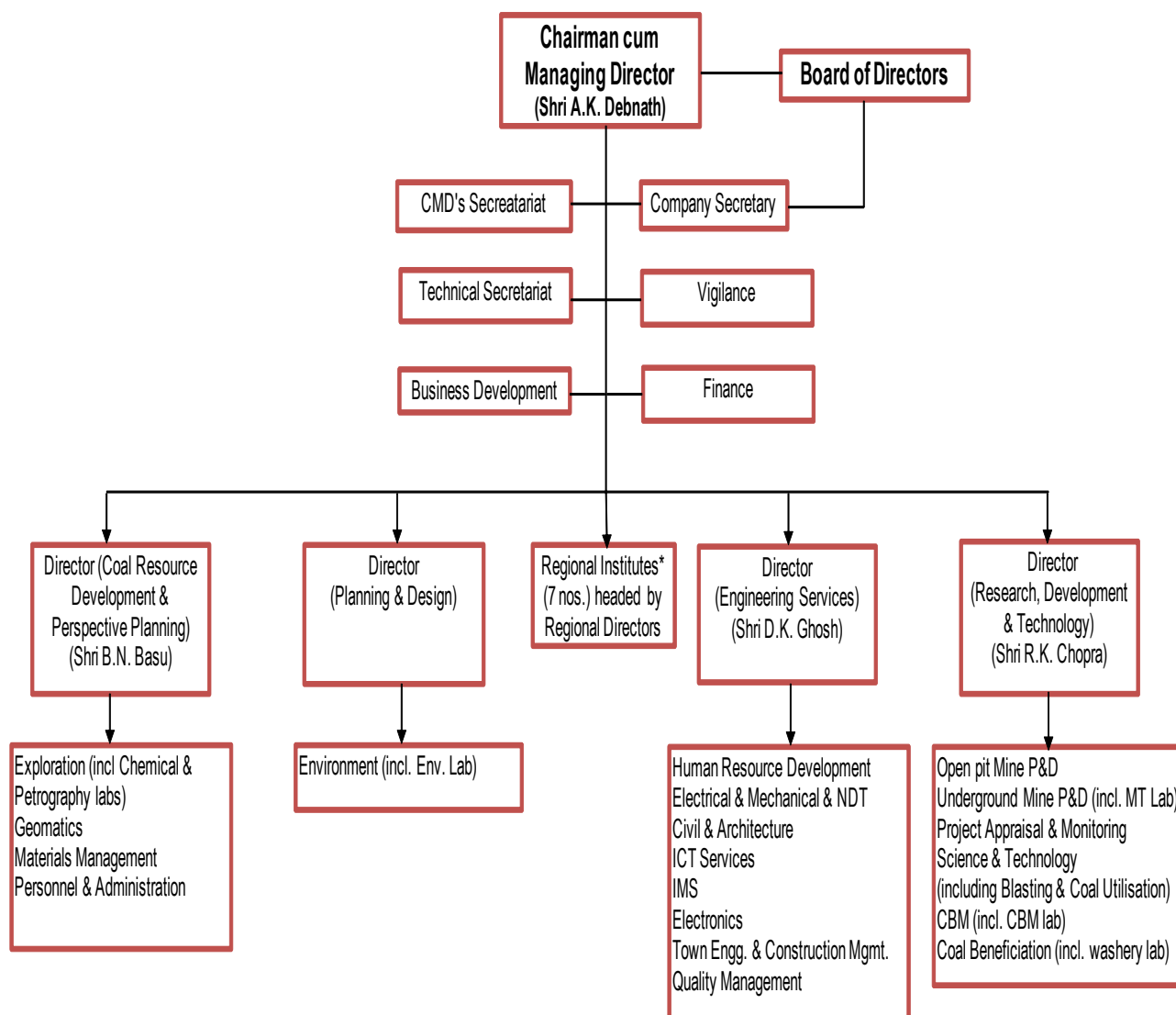
**The Mission of CMPDIL is to provide total consultancy in coal and mineral exploration, mining, engineering and allied fields as premier consultants in India and a leading one in the International arena.**

## Vision

**The Vision of CMPDIL is to be the market leader in an expanding earth resource sector and allied professional activities.**

# ORGANISATION STRUCTURE OF CMPDI

(As on 20.02.2013)



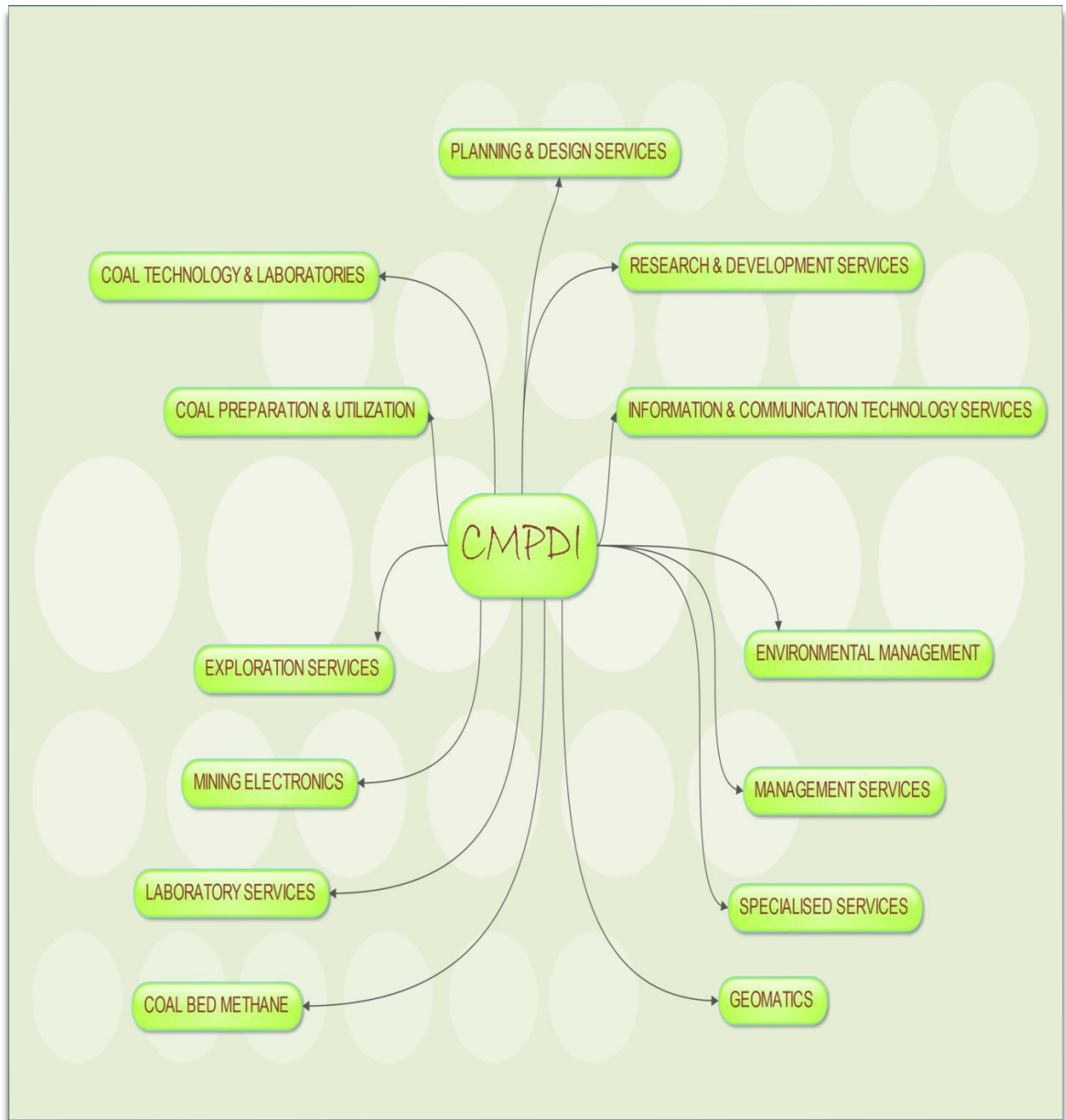
\* For various functional areas, the Regional Directors would report to respective Directors.

Capital Budget, Revenue Budget, Manpower Budget, Recruitment, Promotion & Transfer to be approved centrally.

Presently, Directorate of P&D is directly under CMD.

P&D - Planning & Design  
ICT - Information & Communication Technology  
IMS - Information Management Services (e-library, Library & Publication)

## SERVICES PROVIDED BY CMPDI





### **Exploration Services**

CMPDI has over 500 Coal exploration projects to its credit over different terrains which has resulted in proving 80 billion tonnes of coal. It has the experience of exploration activities in Tanzania.

### **Planning & Design Services**

CMPDI has comprehensive experience in dealing with mining projects having geo-structural complexities. CMPDI has planned about 700 projects for an additional capacity generation of over 500 million tonnes of coal per annum. It has developed expertise in the reconstruction of mines, conversion of underground mines into open cast, mining in rugged terrain.

### **Coal Preparation & Utilisation**

CMPDI offers complete consultancy services for coal washeries and mineral beneficiation.

### **Management Services**

The spectrum of management services covers techno-economic feasibility study, sizing of equipment, finalisation of equipment parameters, development of conceptual design and detailed engineering, equipment specifications, BOQ, tender documents, vendor selection, preparation of contract agreement and site supervision for construction and consultancy & support for standardised Management Systems(e.g. ISO 9001 & its industry specific translations, ISO 14001 & OHSAS 18001) .

### **Research & Development Services**

CMPDI has patented its own technology through development of Special Smokeless Fuel (SSF), the domestic coke. CMPDI is the nodal agency for S&T Projects sponsored by Ministry of Coal, Government of India and R&D projects executed by Coal India Limited.

### **Information & Communication Technology Services**

ICT Division provides consultancy in various areas such as Networking (LAN, WAN & VPN), Database Administration, web design and GIS.

### **Environment Management Services**

The environmental laboratory is recognised by Central Pollution Control Board, Ministry of Environment & Forests, Government of India and accredited with ISO-9001 certification. It undertakes baseline environmental data generation, EIA, EMP and monitoring various factors related environment.

### **Mining Electronics**

Mining Electronics Division is actively associated with the identification and Implementation of Electronics & Control System for underground mines as well as opencast projects besides planning and design of communication network of subsidiaries for providing voice and data communication as a part of CoalNet project. Electronics Department is associated with laboratory activities pertaining to the repair and calibration of different gas detectors/monitors for underground mines based on the approval accorded by the DGMS authority as well as repairing of imported HEMM Electronics cards of 120T/170T/85T Dumpers, Shovels, Draglines, Drill etc.

### Coal Technology & Laboratories

CT & Laboratory Services division of CMPDIL is a centre for excellence in resource quality evaluation, beneficiation and proper utilization of coal/lignite and minerals. Expert services are offered for characterisation of coal and lignite through chemical, petrographic and washability route.

### Geomatics Services

Geomatics Division offers its services in the field of Remote Sensing, GIS & GPS to mining as well as associated utility sectors; ranging from topographical survey, excavation monitoring, mineral exploration, water resource survey to land use mapping, environmental studies, disaster and utility management.

### Specialised Services

CMPDI provides specialised services in various areas such as Geomatics, Ventilation & Gas Survey in mines, Blasting services, non destructive testing and mine support design.

### Laboratory Services

Laboratory Services of CMPDIL is a centre for excellence in resource quality evaluation, beneficiation and proper utilization of coal/lignite and minerals.

### Coalbed Methane

This project is a mine-related CMM demonstration project, which is under implementation at Sudamdih and Moonidih mines of BCCL, in the Jharia Coalfield, Jharkhand State of India. The project having a duration of 5 years, was approved by the Govt. of India at an estimated cost Rs. 76.85 crores.

---

### *Some of our achievements in recent years*

---

#### Laboratory

- Established testing facilities for resin and cement capsules (approved by DGMS)
- Established state-of-the-art CBM Lab in 2008 for conducting CBM related studies

#### Productivity

- Peak productivity of 1464 meter achieved by a Hydrostatic drill (CT-1) during the month of March, 2012 which is the highest productivity achieved in coring drilling in the country

#### Technology

- Captured Coal Resource data of the country in digital form to create a database on all the coalfields of India as part of project entitled Integrated Coal Resource Information System

#### Awards & Accolades

- Geospatial World Excellence Award 2012 in recognition of excellent usage of Geospatial technology for Land Reclamation Monitoring of Coal Mines
- Commendation Certificate of SCOPE Meritorious Award for R&D, Technology Development & Innovation for the year 2009-2010

## CSR & Sustainability overview:

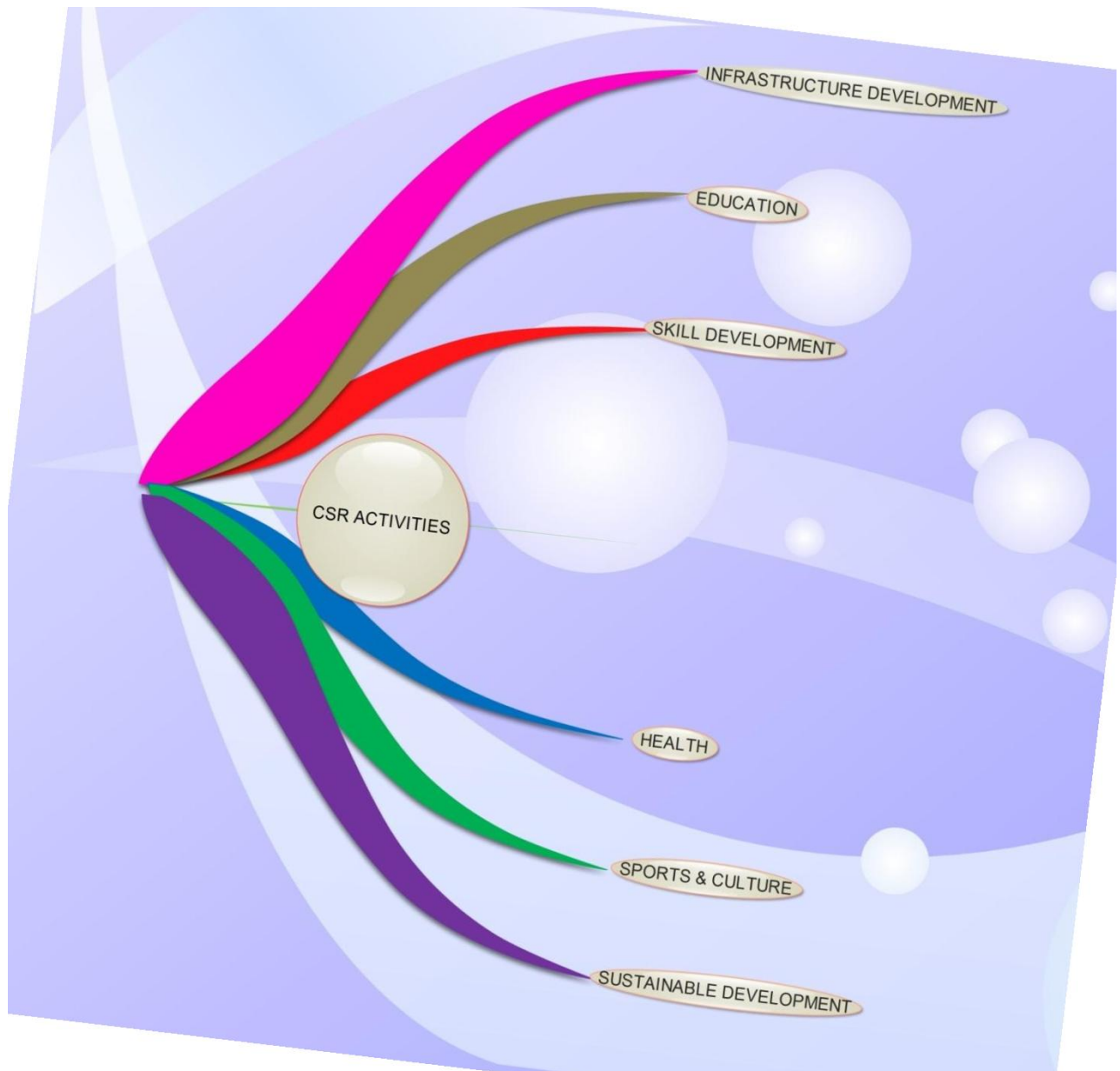
Coal India Limited has a well-defined CSR policy introduced w.e.f. 29.6.2010 based on the guidelines issued by Department of Public Enterprise for Central PSUs on CSR in April, 2010 which is also applicable to CMPDI.

Improving the living condition of the poor and needy people of the society living in and around coalfields/mining areas in different parts of India is the major objective of our CSR activities. The CSR policy is operational within the radius of 15 Km of the project site and areas including Headquarters. Further CSR activities are also undertaken beyond mining areas within the respective State with the approval as per norms.

CIL believes in 'mining with a human face' through a socially sustainable inclusive development. It pursues a structured CSR policy in and around the coal mining areas to improve quality of life with community consensus and inclusive participation.

CSR initiative being implemented by CMPDI has created a strong positive impact on overall development of society as well as on our business. Even in our normal business activities, we try to conduct business in a manner that is beneficial to both, business and society.

**Our CSR & Sustainability Work Comprises of**





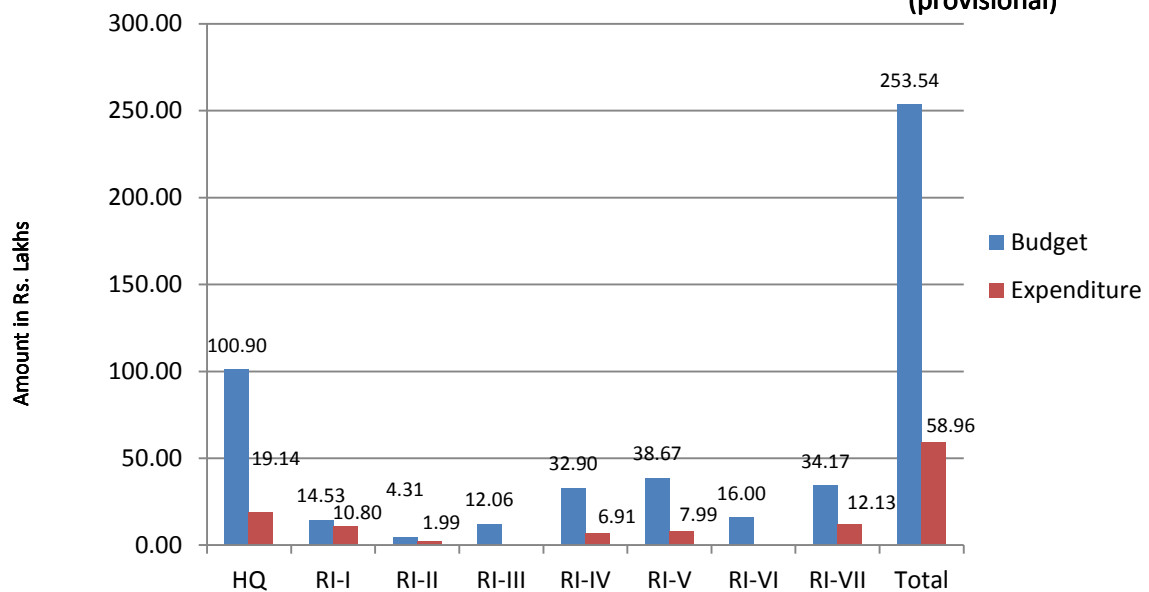
## Our CSR Work in Numbers

*Year wise fund utilized in CSR&SD activities*

Unit of CMPDI	Year wise fund utilized in CSR&SD activities (Rs in Lakhs)			
	2011-12		2012-13	
	Budget	Expenditure	Budget	Expenditure
HQ	31.40	19.44	69.92	<b>33.18</b>
RI-I	6.80	3.80	22.30	<b>11.90</b>
RI-II	2.00	0.05	5.15	<b>4.20</b>
RI-III	7.60	6.37	9.95	<b>9.89</b>
RI-IV	8.30	8.55	9.50	<b>8.61</b>
RI-V	14.55	7.81	21.40	<b>18.67</b>
RI-VI	3.50	3.49	8.15	<b>8.15</b>
RI-VII	6.50	-	16.50	<b>11.32</b>
<b>Total</b>	<b>80.65</b>	<b>49.51</b>	<b>162.87</b>	<b>105.92</b>

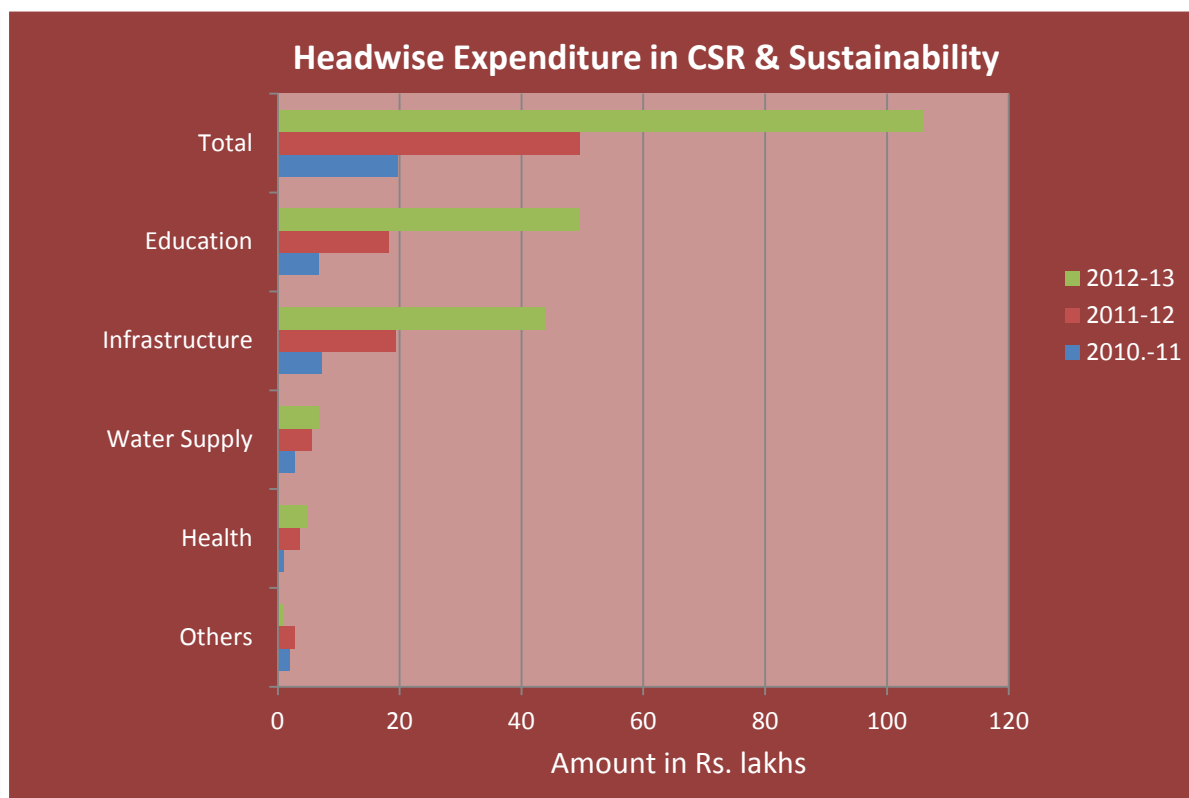
### CSR Expenditure (up to Jan'14) vs Budget for 2013-14

(provisional)

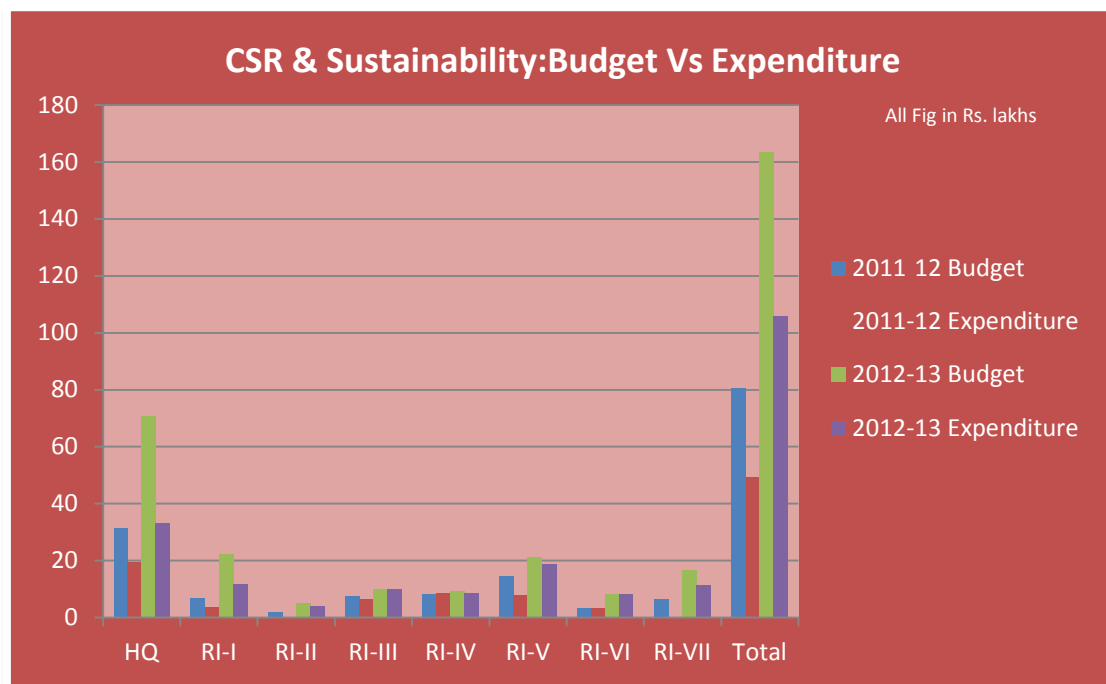


*Head-wise Expenditure on CSR & Sustainability activities*  
(Rs. in Lakhs)

SN	Areas	2010 11	2011 12	2012 13
1	Education	6.74	18.26	<b>49.50</b>
2	Infrastructure	7.20	19.26	<b>43.77</b>
3	Water Supply	2.83	5.60	<b>6.65</b>
4	Health	0.98	3.58	<b>4.96</b>
5	Others	1.85	2.81	<b>1.04</b>
	<b>Total</b>	<b>19.60</b>	<b>49.51</b>	<b>105.92</b>



The year-wise utilization of fund against the budget allocated for all the units of CMPDI is shown below. The total budget for 2012-13 was Rs.163.52 lakhs against Rs.80.65 lakhs in 2011-12 while the expenditure for the corresponding period was 105.92 lakhs and Rs.49.51 lakhs respectively. There is a considerable increase in utilization of the budget in 2012-13 as compared to the previous year.



## CSR & Sustainability Activities

We at CMPDI believe that our CSR and Sustainability policies should address social, economic and environmental concerns and that the selection of activities should focus on the social, economic and environmental impact thereof, rather than mere output or outcomes. We strive to carry out our activities in such a manner that the philosophy of CSR and Sustainability becomes ingrained in our organization and it reflects in our organizational culture and involves all employees engaged in diverse business operations and activities. For that our top management has taken the initiative in bringing such change and inculcates the above mentioned values in every individual of our company.

It is expected from us that we being a socially responsible public sector enterprise, would take initiatives to promote organizational integrity and ethical business practices through transparency in disclosure and reporting procedures, and contribute to inclusive growth and equitable development in society through capacity building measures, empowerment of the marginalized and underprivileged sections / communities.

There is no one size fits all method for implementing CSR and Sustainability. Each company has its unique characteristic circumstances that affects as to how it views its social responsibility, environmental & social challenges and also to address stakeholders demand for greater transparency, accountability and responsibility. CSR & Sustainability not only helps us to secure our social license to operate but also contribute in a meaningful way to sustainable development and ultimately add value not just for shareholders, but also for our entire stakeholders, for the community and others who are affected by our company's operations.

CMPDI reiterates its commitment to social responsibility towards CSR & sustainability by integrating social and environmental concerns in day-to-day business operations. Our CSR committee for 2012-13 was headed by Director (T/P&D) and comprised of 12 other members.

Keeping in view the special nature of its business, CMPDI has initiated its CSR & Sustainability activities and an overview of our activities pursued in 2012-13 is enlisted in the following pages.



## Health

We organised Medical checkup camps on various occasions for the poor and for school going children as well. Some highlights of the Medical camps organized by us during 2012-13 are given below.



Medical Camp at Lower Misirgonda



Medical camp at Birsa School, Hathiagonda

Medical Check up was done by Doctors of CMPDI & Lions Club and assisted by Para Medical Staff of CMPDI & Lions Club. During the Medical Check-up Camp JCC Members of CMPDI as well as CSR Committee members were also present.



*Medical Camp organised at Hathiagonda, Kanke Road, Ranchi in which 160 villagers were clinically checked and were given free medicine..*



General medical check-up camp was organised at Birsa High School, Hathiagonda, Kanke Road, Ranchi, in which 205 students were clinically checked and were given free medicine. Medical check-up was done by Dr. Om Prakash, Medical Suptdt. of CMPDI & Dr. Kamlesh of Lions Club, Ranchi East and assisted by Para Medical Staff of CMPDI & Lions Club.



General Medical Check-up Camp was organised at Bukru Village, Kanke Road, Ranchi in association with Lions Club, Ranchi East, in which 176 villagers were clinically checked and were given free medicine.



### General Medical-cum-Eye-cum-Blood Check-up Camps

Organised at Gondwana Primary School, Kanke Road, Ranchi in which 119 students were clinically checked and were given free medicine. The Check-up was done by Dr. Om Prakash, Medical Suptdt. of CMPDI & Dr. (Smt.) Mayuri Bhattacharya, Dr. K.K. Das, Dr. (Miss) Ankita Chakraborty of CCL Hospital, Gandhinagar and assisted by Para Medical Staff of CMPDI. Another similar check up camp was organized at Patragonda, Kanke Road, Ranchi in which 180 villagers were clinically checked and were given free medicine.



Medical-cum-Eye Check-up Camp organised at Birsa High School, Hathiagonda, Kanke Road, Ranchi, in which 286 students were clinically checked and were given free medicine.



Patients being checked at Patragonda, Kanke Road, Ranchi



Medical Camp organized by RI-II at Village Gopinathdih, Dhanbad



A Medical-cum dental check up camp was organised at Gondwana Primary School, Kanke Road, Ranchi in which 150 students were clinically checked and were given free medicine

Medical Camp at Chalkari, organised by RI-III, Ranchi



Free check-up and medicines distribution at Pundi organised by RI-III, Ranchi



## AWARENESS PROGRAMMES



An Awareness Programme on HIV/ AIDS was organised in association with Jharkhand AIDS Control Society at Birsa School, Hathiagonda, Kanke Road, Ranchi. Students were made aware of the causes, symptoms and prevention of HIV/AIDS. 169 students attended the programme

● ● ●  
An Awareness Programme on HIV/ AIDS was organised in association with Jharkhand AIDS Control Society at Bukru village, Kanke Road, Ranchi. The villagers were made aware of the causes, symptoms and prevention of HIV/AIDS. 190 villagers attended the programme



HIV/ AIDS Awareness Programme & Medical Camp organized by RI-II Dhanbad at Malidih

## Education

We understand that improving the quality of education and facilitating the access to educational institutions is of utmost importance for the development of our children. Our initiatives are aimed towards trying to meet the needs of both educational institutes and the children studying there.

*Plastic Chairs being handed over to the Principal of Birsa School, Hathiagonda*



*Tube lights given to the Principal, Birsa School, Hathiagonda*

*Study Materials being given to the students of Birsa School, Hathiagonda*







Almirah, Office Tables and Chairs, Desk Benches, School Uniform, Sports Material & Lab. Materials were handed over to the Principal, Birsa High School, Hathiagonda, Kanke Road, Ranchi. On this occasion JCC Members of CMPDI as well as CSR Committee members were also present

School fees of 13 poor students of J.M.J. School, Doranda, Ranchi for one year was given. In this occasion JCC Members of CMPDI as well as CSR Committee members were also present



20 nos. of benches and desks to Puranpania School, Puranpania by RI-III, Ranchi

We at CMPDI understand the essence of monetary help to impoverished people. Although we always stress upon their capacity building yet we feel that their immediate concerns should also be addressed by providing them monetary help from time to time



Uniform, Note books & stationery for 300 school going children of Utkramit Madya Vidyalaya, Mallikdih, given by RI-II, Dhanbad

60 nos. of bench and desk provided to Utkramit Madhya Vidyalaya, Bonahara by RI-III, Ranchi



100 Nos. of three seater wooden benches and desks to Government School, CWS, Jayant given by RI-VI





30 sets of 3 seaters desks & benches for the students of Shyama Devi Free Primary School, Radha Nagar Road, Burnpur, Distt.- Burdwan, W.B by RI- I, Asansol



30 sets of 3 seaters desks & benches for the students of Ethora Free Primary School, Distt.- Burdwan, W.B.by RI-I, Asansol

---



30 sets of 3 seaters desks & benches for the students of Swami Vivekananda School, Asansol, WB by RI-I, Asansol

---



50 desk benches were provided for school of Shivpur Gram Panchayat (near Murpar camp) by RI-IV, Nagpur



A cheque for Rs. 15,000/- was handed over to the Principal, Gondwana Primary School, Kanke Road, Ranchi towards Annual Day Celebration



A cheque for Rs. 21,780/- was handed over to the Principal, Gondwana Primary School, Kanke Road, Ranchi towards fee of the meritorious & poor students



A cheque for Rs. 48,960/- was handed over to the Principal, Birsa High School, Hathiagonda, Kanke Road, Ranchi towards fee of the meritorious & poor students



A cheque for Rs. 11,229/- was handed over to Shri Jagbandhu Sahoo, a poor labourer, towards school fees, study materials & uniform etc. of his school going son



## Infrastructure



Construction of Urinal-cum-Toilet Blocks for Boys & Girls students of Dhakeswari H.S. School, Distt.- Burdwan by RI-I, Asansol



Manufacture and installation of main entry gate of Karnani Free Primary School, Chellidanga, Asansol by RI-I, Asansol



Construction of marriage mandap at village Chalkari  
by RI-III, Ranchi



20 Chairs & Dari to Mahila Samiti, Pundi Village by RI-III





Construction of RCC Stage & Shed at Chandanwahi School, Raiura by RI- IV, Nagpur

Construction of one Passenger shed for the villagers of Garda at CWS Jayant by RI- VI, Singrauli



Construction of boundary wall of Govt. U.G. High School, Baripada by RI-VII, Bhubaneswar



Construction of toilet for boys & girls with septic tank & soak pit and construction of remaining portion of boundary wall by RI-VII.





Assistance to Old Age Home at Kalyankunj by RI-V, Bilaspur



Utensils for Khamtarai village school & Deorikhurd village school

provided by RI- V, Bilaspur



The complete list of activities carried out during 2012-13 is placed below:

Sl. No.	Unit	Activities
1	CMPDI, HQ, Ranchi	General Medical Check-up Camp was organised at Lower Misirgonda, Kanke Road, Ranchi
2		General Medical Check-up Camp was organised at Birsa School, Hathiagonda, Kanke Road, Ranchi in association with Lions Club, Ranchi East,
3		An Awareness Programme on HIV/ AIDS was organised in association with Jharkhand AIDS Control Society at Birsa School, Hathiagonda, Kanke Road, Ranchi.
4		General Medical-cum-Eye-cum-Blood Check-up Camp was organised at Gondwana Primary School, Kanke Road, Ranchi
5		General Medical-cum-Eye Check-up Camp was organised at Patragonda, Kanke Road, Ranchi
6		General Medical-cum-Eye Check-up Camp was organised at Birsa High School, Hathiagonda, Kanke Road, Ranchi
7		General Medical Check-up Camp was organised at Hathiagonda, Kanke Road, Ranchi
8		General Medical-cum Dental Check-up Camp was organised at Gondwana Primary School, Kanke Road, Ranchi
9		A cheque for Rs. 15,000/- was handed over to the Principal, Gondwana Primary School, Kanke Road, Ranchi towards Annual Day Celebration.
10		A cheque for Rs. 21,780/- was handed over to the Principal, Gondwana Primary School, Kanke Road, Ranchi towards fee of the meritorious & poor students.
11		A cheque for Rs. 48,960/- was handed over to the Principal, Birsa High School, Hathiagonda, Kanke Road, Ranchi towards fee of the meritorious & poor students.
12		General Medical Check-up Camp was organised at Birsa High School, Hathiagonda, Kanke Road, Ranchi,
13		A cheque for Rs. 11,229/- was handed over to Shri Jagbandhu Sahoo, a poor labourer, CMPDI, Kanke Road, Ranchi towards School fees, Study materials & Uniform etc. of his school going son.
14		General Medical Check-up Camp was organised at Bukru Village, Kanke Road, Ranchi in association with Lions Club, Ranchi East
15		An Awareness Programme on HIV/ AIDS was organised in association with Jharkhand AIDS Control Society at Bukru village, Kanke Road, Ranchi.
16		25 Nos. of Plastic Chairs were handed over to the Principal, Birsa High School, Hathiagonda, Kanke Road, Ranchi. In this occasion JCC Members of CMPDI as well as CSR Committee members were also present.
17		60 Nos. of Tubelight were handed over to the Principal, Birsa High School, Hathiagonda, Kanke Road, Ranchi.
18		Study materials (Copy, Pencil & Pencil Box) were supplied to the 950 students of Birsa High School, Hathiagonda, Kanke Road, Ranchi.



Sl. No.	Unit	Activities
19	<b>CMPDI, HQ, Ranchi</b>	School fees of 13 poor students of J.M.J.School, Doranda, Ranchi
20		General Hygiene check up Camp was organised at Birsa High School, Hathiagonda, Kanke Road, Ranchi,
21		01 No. Almirah, 01 Office Table, 05 Nos. Office Chair, 83 Nos. Desk Bench, 125 Nos. School Uniform, Sports Material & Lab. Materials were handed over to the Principal, Birsa High School, Hathiagonda, Kanke Road, Ranchi.
22		A cheque for Rs. 9,735/- was handed over to Shri Jagbandhu Sahoo, a poor labourer, CMPDI, Kanke Road, Ranchi
23	<b>CMPDI, RI-I, Asansol</b>	Construction of Urinal-cum-Toilet Blocks for Boys & Girls students of Dhakeswari H.S.School, Distt.-Burdwan.
24		Manufacture & installation of main entry gate of Karnani Free Primary School, Chellidanga, Asansol.
25		Supply of 30 sets of 3 seater desks & benches for the students of Shyama Devi Free Primary School, Radha Nagar Road, Burnpur, Distt.- Burdwan, W.B.
26		Supply of 30 sets of 3 seater desks & benches for the students of Ethora Free Primary School, Distt.- Burdwan, W.B.
27		Supply of 30 sets of 3 seater desks & benches for the students of Swami Vivekananda School, Asansol, W.B.
28		Supply of 30 sets of 3 seater desks & benches for the students of Asansol Dr. Shyama Prasad Vidyalaya, Asansol, W.B.
29		Supply of 4 nos. Table & 6 Nos. Chairs for Ethora Free Primary School, Distt.- Burdwan, W.B.
30		Supply of 80 sets of 3 seater high & low benches for the three Primary Schools of the locality (Barachak FP School- 30 sets, Karnani FP School- 25 sets, Kumarpur FP School- 25 sets)
31	<b>CMPDI, RI-II, Dhanbad</b>	Medical Camp at Gopinathdih
32		HIV/ AIDS Awareness Programme & Medical Camp at Malidih
33		Uniform for 200 school going children of Utkramit Madhya Vidyalaya, Gopinathdih
34		Uniform, Note books & stationery for 300 school going children of Mallidih.
35	<b>CMPDI, RI-III, Ranchi</b>	60 nos. of desk bench has been given to Utkramit Madhya Vidyalaya, Bonahara
36		10 nos. of desk bench has been given to Rajkiya Madhya Vidyalaya, Pundi
37		20 nos. of desk bench has been given to Puranpania School, Puranpania
38		120 nos. of desk bench has been given to Chalkari Madhyamik Vidyalaya, Chalkari
39		Free check-up and medicines distribution at Chalkari

Sl. No.	Unit	Activities
40	<b>CMPDI, RI-III, Ranchi</b>	Free check-up and medicines distribution at Duni
41		Free check-up and medicines distribution at Pundi
42		Free check-up and medicines distribution at Orla
43		Free check-up and medicines distribution at Kurse
44		Construction of Marriage Mandap at Chalkar
45		20 Nos. of Chair & Dari were handed over to Mahila Samiti, Pundi Village
46		25 nos. of desk bench has been given to Duni Madhya Vidyalaya, Duni
47	<b>CMPDI, RI-IV, Nagpur</b>	Construction of RCC Stage & Shed at Chandanwahi School, Rajura
48		50 Nos. of Desk-benches for Shivaji High School, Rajura (near Anandwan drilling site)
49		50 Nos. of Desk-benches for School of Shivapur Gram Panchayat, Rajura (near Murpar Camp)
50		School bags, copies, sweaters for the children of BalNikunj Scholl, Jaripatka, Nagpur
51	<b>CMPDI, RI-V, Bilaspur</b>	Utility material for old age home at Bilaspur
52		Utility material for Orphanage at Bilaspur
53		Furniture, Desk, benches, utensils etc. for Khamtarai village school
54		Utensils for Deorikhurd village school
55		Iron cots and chairs for HIV/AIDS patients (10 Nos.) of Maria Sahay Community Care Centre, Link Road, Bilaspur
56	<b>CMPDI, RI-VI, Singrauli</b>	Fabrication and supply of 100 Nos. of three seater wooden benches and desks to Government School, CWS, Jayant
57		Construction of one Passenger shed for the villagers of Garda at CWS Jayant
58	<b>CMPDI, RI-VII, Bhubaneswar</b>	Construction of boundary wall of Govt. U.G. High School, Barapada (Around 320 students (including SC/ST & Genl.) are studying
59		Construction of toilet for boys & girls with septic tank & soak pit. Construction of remaining portion of boundary wall.

## Sustainability Activities

We have prepared a detailed report on our sustainable development activities carried out during 2012-13. Here we are providing a brief overview of our sustainability activities.

### Goals

Goal of the sustainable activities finalized and conducted by CMPDI for the year 2012-13 were:



## Implementation

All the activities were implemented at CMPDI on time within budget with proper monitoring from time to time. A detailed description for each of the projects is provided below.

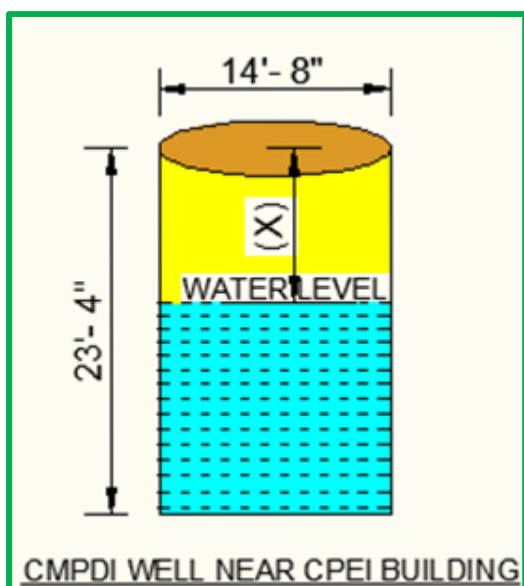
### Rainwater Harvesting

7000 sq m of roof top area was considered for rain water harvesting. Project was awarded to Gautam Construction after a tendering progress. Physical & financial progress of the project was reported timely.

#### *Details of area considered for rainwater harvesting*

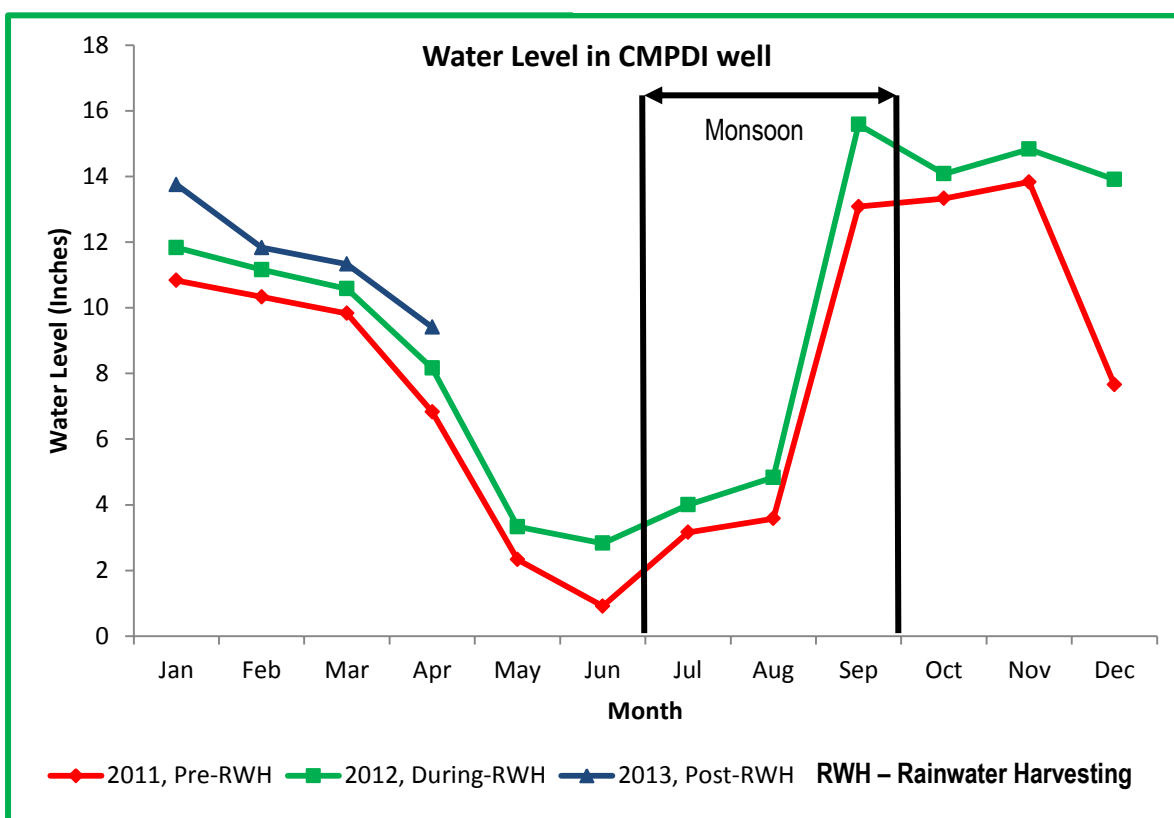
Type of Quarter	Number	Roof Area
A	80	6 Block x 4 Roof x 42 m <sup>2</sup> = 1008 m <sup>2</sup>
B	178	7 Block x 4 Roof = 28 Nos Roof 4 Block x 4 Roof = 16 Nos Roof 2 Block x 3 Roof = 06 Nos Roof Total = 50 Nos Roof x 62 m <sup>2</sup> = 3100 m <sup>2</sup>
C	131	7 Block x 4 Roof = 28 Nos Roof 2 Block x 3 Roof = 06 Nos Roof 2 Block x 4 Roof = 08 Nos Roof Total = 42 Nos Roof x 92 m <sup>2</sup> = 3864 m <sup>2</sup>
D	48	2 Block x 3 Roof = 6 Roof x 205 m <sup>2</sup> = 1230 m <sup>2</sup>





*Water Level in CMPDI Well (Near CPEI Building)*

Depth (X)	2011	2012	2013
Jan	12'6"	11'6"	9'7"
Feb	13'0"	12'2"	11'6"
Mar	13'6"	12'10"	12'0"
Apr	16'6"	15'2"	13'11"
May	21'0"	20'0"	
Jun	22'5"	20'6"	
Jul	20'2"	19'4"	
Aug	19'10"	18'6"	
Sep	10'4"	7'10"	
Oct	10'0"	9'4"	
Nov	9'6"	8'6"	
Dec	15'8"	9'5"	



*Rainwater harvesting program at CMPDI*

The figure above shows the water level in CMPDI well for three consecutive years (2011 to 2013). The water level decreases in the summer months (March to June) followed by increase in Monsoon (July to September) and then decreases again. The rainwater harvesting program at CMPDI started in January 2012 and concluded. A visible increase in the water level in CMPDI well near CPEI building can be seen in the year 2012 and 2013 (data available upto April) thereby reflecting success of the program.



### Energy Conservation

Activity was taken up by the town engineering department. The T-5 fittings were installed at various places instead of the conventional tube-lights after detailed estimations of cost, efficiency improvement and cost efficiency of the program.



*Energy conserving lights being used at CMPDI office*



*Energy conserving lights being used at CMPDI colony*

## Workshop

A day-long workshop on sustainable development was held at CMPDI HQ on 23<sup>rd</sup> March 2013. Details about the workshop have been presented in the training and awareness section of this report. Few more glimpses of the workshop are shown below.



*Workshop on Sustainable Development at CMPDI*

## Total environmental protection expenditures and investment by types

S. No.	Activity	Total Expenditure (Rs. Lakhs)	Remarks
1	Water Management (Roof top rain water harvesting of balance quarters and balance service buildings at CMPDI (HQ) Ranchi)	44.76 (Awarded)	Work completed and payment made.
2	Energy conservation (By replacing existing conventional tube lights (fluorescent lights) with LED)	29.63 (As on Apr 2012)	Expenditure so far, work in progress but target has been achieved.
3	Satellite Surveillance (Coverage of major OC projects for land restoration and reclamation)	352.00	@ Rs 8.00 lakhs per project for 44 projects being awarded and funded by CIL
4	Workshop on sustainable development	1.00 (Actual)	Incurred in March 2013
5	Sustainable development reporting	The project has been done in house	Reporting is being done in-house

**रांची, 27 नवम्बर** : **सीएसआर अवार्ड मिला**  
 ऑफ पब्लिक इंस्टीच्यूट (आईपीई), हैदराबाद स्थित एक अग्रणी बिजनेस स्कूल ने विगत 24 नवंबर को मुम्बई में निगमित सामाजिक दायित्व ने सीएमपीडीआई को सर्वोत्तम कार्य एवं योगदान के लिए पुरस्कार दिया है। इस अवार्ड को आईपीई ने प्रदान किया तथा वर्ल्ड सीएसआर कांग्रेस, वर्ल्ड सीएसआर डे तथा सीएसओ, एशिया एंड एशियन कंफेडरेशन ऑफ बिजनेस ने समर्थन किया है। आईपीई ने कई ऐसे लोक उपक्रमों को पुरस्कृत किया है, जिनोंने सीएसआर के क्षेत्र में सर्वोत्तम कार्य किया है।

## 205 लोगों की स्वास्थ्य जांच

रांची : सीएमपीडीआई ने अपने सीएसआर कार्यक्रम के तहत शनिवार को बिरसा उच्च विद्यालय, हथिया गोंदा में चिकित्सा शिविर लगाया। इसमें आसपास के करीब 205 लोगों के स्वास्थ्य की जांच की गई। उन्हें ठीक सलाह के साथ जरूरी दवाएं भी निःशुल्क दी गईं। मरीजों की जांच सीएमपीडीआई के चिकित्सा अधीक्षक डॉ. ओमप्रकाश व निरामया अस्पताल के डॉ. कमलेश ने की। मौके पर अशोक यादव, सर्वेश प्रसाद, समीर विश्वास, एबी सहाय, बिमलेंद्र कुमार, अरुण कुमार आदि उपस्थित थे।

## चिकित्सा शिविर का आयोजन

रांची : सीएमपीडीआई ने बिरसा उच्च विद्यालय हथिया गोंदा, कांके रोड में सामान्य चिकित्सा शिविर लगाया। इस शिविर में 205 ग्रामीणों के स्वास्थ्य की जांच कंपनी के चिकित्सा अधीक्षक डॉ. ओम प्रकाश तथा लायस क्लब के निरामया अस्पताल के डॉ. कमलेश ने की तथा चिकित्सीय परामर्श के साथ निःशुल्क दवाइयां दी। इस मौके पर जेसीसी के सदस्य अशोक यादव, सर्वेश प्रसाद, समीर विश्वास एवं सीएमओआई के एबी सहाय, बिमलेंद्र कुमार, अरुण कुमार, सुमन रस्तोगी, एके मिश्र एवं रोहित कुमार मौजूद थे।

## स्कूल फीस का चेक वितरित

सीएमपीडीआई ने गोंदवाना प्राइमरी स्कूल एवं बिरसा उच्च विद्यालय, गोंदा कांके रोड में पढ़ने वाले व मेधावी छात्रों के वर्ष 2012-13 का स्कूल फीस दोनो प्राचायों को चेक के माध्यम से वितरित किया।

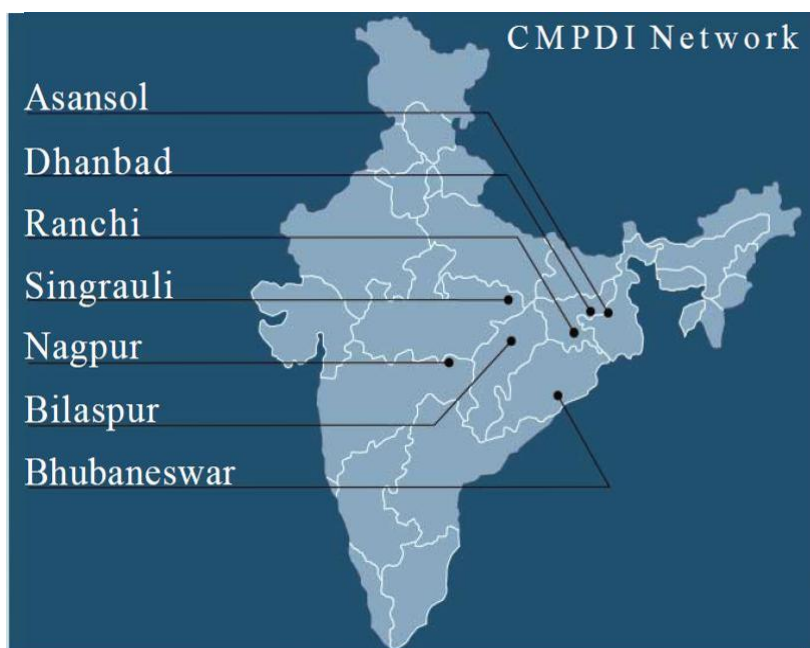
## सीएमपीडीआई ने मेधावी छात्रों के लिए फीस राशि

रांची। सीएसआर के तहत सीएमपीडीआई द्वारा गोंदवाना प्राइमरी स्कूल कांके रोड रांची तथा बिरसा उच्च विद्यालय गोंदा कांके रोड रांची में अध्ययनरत गरीब एवं मेधावी छात्र एवं छात्राओं के एक वर्ष की फीस की राशि के प्रधानाध्यापकों को दी गयी। वर्ष 2012-13 के लिए यह राशि दी गयी है। इस मौके पर जेसीसी के सदस्य अशोक यादव, सर्वेश प्रसाद, समीर विश्वास, सीएमओआई के एबी सहाय, उप महाप्रबंधक बिमलेंद्र कुमार, प्रशासन अरुण कुमार, डा.ओम प्रकाश चिकित्सा अधीक्षक सहित अन्य लोग उपस्थित थे।

## चिकित्सा शिविर में 205 लोगों की जांच

रांची। सीएमपीडीआई ने बिरसा उच्च विद्यालय हथियागोंदा कांके रोड रांची में एक सा सामान्य चिकित्सा शिविर लगाया। इसमें 205 ग्रामीणों की सामान्य जांच डा.ओम प्रकाश चिकित्सा अधीक्षक अस्पताल रांची ईस्ट के डॉ. कमलेश द्वारा की गयी एवं उन्हें चिकित्सीय परामर्श के साथ निःशुल्क दवाइयां दी। इस कार्य में सीएमपीडीआई के पार मेडिकल स्टाफ ने भी सहयोग किया। इस मौके पर जेसीसी के सदस्य अशोक यादव, सर्वेश प्रसाद, समीर विश्वास, सीएमओआई के एबी सहाय, उप महाप्रबंधक बिमलेंद्र कुमार, प्रशासन अरुण कुमार, डा.ओम प्रकाश चिकित्सा अधीक्षक सहित अन्य लोग उपस्थित थे।





### **Regional Institute-I**

West End, G.T Road, Asansol - 713 301, West Bengal

Tel: +91 341 2253504 Fax: +91 341 2250935 e-mail: ri1@cmpdi.co.in

### **Regional Institute-II**

Koyla Bhawan, Koyla Nagar, Dhanbad - 826 006, Jharkhand

Tel: +91 326 2230500 Fax: +91 651 2230789 e-mail: ri2@cmpdi.co.in

### **Regional Institute-III**

Gondwana Place, Kanke Road, Ranchi - 834 031, Jharkhand

Tel: +91 651 2231506 Fax: +91 651 2230501 e-mail: ri3@cmpdi.co.in

### **Regional Institute-IV**

Kasturba Nagar, Jaripatka, Nagpur - 440 014, Maharashtra

Tel: +91 326 2230500 Fax: +91 712 2642134 e-mail: ri4@cmpdi.co.in

### **Regional Institute-V**

SECL Campus, Seepat Road, Bilaspur - 495 005, Chattisgarh

Tel: +91 7752 246481 Fax: +91 7752 277600 e-mail: ri5@cmpdi.co.in

### **Regional Institute-VI**

CWS Colony, P.O Jayant Colliery, Sidhi - 486 890, Madhya Pradesh

Tel: +91 326 2230500 Fax: +91 651 2230789 e-mail: ri6@cmpdi.co.in

### **Regional Institute-VII**

Gruha Nirman Bhawan, Sachivalaya Marg, Bhubneswar - 751 001, Orissa

Tel: +91 674 2394357 Fax: +91 674 2408760 e-mail: ri7@cmpdi.co.in